

SALISBURY ABROAD 2019 / 2020

Fall & Spring Programs

Salisbury
UNIVERSITY

Salisbury Abroad: Fall and Spring Programs 2019/2020



contents

SALISBURY ABROAD 2019/20

Study Abroad Program Sites.....	1
Study Abroad Next Steps.....	2
How Can I Study Abroad at SU?.....	3
Salisbury Abroad: Integration.....	4
Salisbury Abroad: Chile	5
Salisbury Abroad: China	7
Salisbury Abroad: Columbia	9
Salisbury Abroad: Costa Rica	11
Salisbury Abroad: England	13
Salisbury Abroad: Estonia	15
Salisbury Abroad: France – French Language, Culture and Literature	17
Salisbury Abroad: France Business	19
Salisbury Abroad: Hong Kong	21
Salisbury Abroad: Global Experiences Internship Program	23
Salisbury Abroad: India	25
Salisbury Abroad: Japan	27
Salisbury Abroad: New Zealand	29
Salisbury Abroad: Scotland	31
Salisbury Abroad: South Korea	33
Salisbury Abroad: Spain	35
Salisbury Abroad: Environmental Field Studies	37
Salisbury Abroad: Sweden	39
Salisbury University Affiliate Partners.....	41
Short-Term Study Abroad Programs and Global Seminars.....	42

Cover Photo: Lisa Nii Nyamekye, an international business major, studied at Grenoble Ecole de Management in France. Louvre Pyramid in Paris, France in the background.

Salisbury Abroad: **Next Steps**

Alright, you're interested in studying abroad ... what happens now?

Review the program pages online for updated details:
www.salisbury.edu/abroad

1

Meet with your academic advisor to ensure your desired program fits within your major

3

While you're waiting to hear about acceptance, apply for financial aid:
www.salisbury.edu/abroad

5

Set up a meeting with a study abroad advisor via GullNet; Make Appointment; Study Abroad
sucie@salisbury.edu or 410-677-5027

2

Apply to the program on the Office of Study Abroad website
www.salisbury.edu/abroad

4

Apply to the program on the Office of Study Abroad website
www.salisbury.edu/abroad

4



How Can I Study Abroad at SU?

Salisbury Abroad Semester Programs

- Programs available fall and spring terms.
- Courses integrated into many SU degree programs.
- Many fall and spring semester programs cost the equivalent of a semester in Salisbury.
- Students apply using the SU online application forms.
- Students earn SU credits.
- All SU financial aid can be applied.

Short-term Study Abroad and Salisbury Global Seminars

- January term, summer term and spring break programs.
- Salisbury Global Seminars led by SU faculty.
- Earn SU credits.
- One week to four weeks abroad.
- Courses integrated into many SU degree programs.

Affiliate Programs

- Students apply directly to the affiliate program as well as through SU's online application.
- Students pay tuition and fees directly to the affiliate.
- Students pay no SU tuition for the period they are studying abroad.
- Students must apply online and meet with Study Abroad staff in order to maintain their SU student status while abroad.
- Students in status with Study Abroad while abroad may transfer SU financial aid to the affiliate program.
- Students in status with Study Abroad while abroad have all credits pre-approved for transfer prior to departure.

You can apply for any Study Abroad Program online at: www.salisbury.edu/abroad

Just click on the world map and select your program of choice!

Please see each individual study abroad program website for any additional application requirements (essay, recommendation form, etc.).



Salisbury Abroad: **Integration**

Salisbury Abroad semesters can be integrated into any four-year degree. Each major is different and some majors are more flexible than others. Start planning early to integrate a Salisbury Abroad semester into your college education!

ACADEMIC INTEGRATION



Junior Year

During the junior years, SU students can choose specific Salisbury Abroad semester programs that are built right into the student's area of specialization:

- Major courses
- Minor courses



Freshman-Sophomore Years

Students in any major can integrate a Salisbury Abroad semester during their first two years:

- General Education courses
- Major prerequisite courses
- Minor courses



Senior Year

In many majors, students can integrate an internship or undergraduate research project with advanced courses in the major or minor during a Salisbury Abroad semester. Such an approach can make a significant contribution to a student's first resume or graduate school application:

- Internship
- Major courses
- Minor courses
- Research Project

FINANCIAL INTEGRATION

Integrating a Salisbury Abroad semester into your degree is affordable:

- Salisbury Abroad semester costs often are comparable to semester costs in Salisbury
- All current financial aid transfers for any SU partner program
- Financial aid is available





Salisbury Abroad Direct Enroll: **Universidad Adolfo Ibanez**

HIGHLIGHTS

- Earn credits in business, Spanish or Latin American studies in the fall or spring semester
- Study in Chile for about the same cost as a semester at Salisbury
- Live with a host family to gain a richer understanding of Chilean culture and improve your Spanish
- Gain insights into Latin America while living along the beautiful Pacific coast in one of Latin America’s most dynamic economies

The Salisbury Abroad: Chile program allows Salisbury University students the opportunity to take courses taught in English in business in Latin America and Latin American studies alongside courses at all levels in Spanish language, literature and culture. The cost of the program for tuition, room and board with a Chilean family is equivalent to the costs for one semester in Salisbury.

Chile is a beautiful South American nation with a rich cultural history. It is world-renown for its ski resorts in the snow-capped Andes Mountains and its popular wines cultivated in the shadows of these same mountains. The city of Viña del Mar is located approximately one and a half hours from the capital of Santiago and is a popular Pacific Coast beach resort. Infrastructure within Chile is well developed and there are opportunities to explore the many facets of this Latin American nation during a semester of study.

CLASSES

Students may spend either the fall or spring semester at the Universidad Adolfo Ibanez. In either semester, students may choose from among a selection of courses taught in English in business and/or Latin American studies as well as a selection of courses taught in Spanish on Spanish language, culture and literature.

Business Studies: Students from the Perdue School of Business can select from a rich curriculum in business within a Latin American setting. As one of the very few Latin American business schools with AACSB accreditation, business students can easily count their upper-level business courses for their majors in the Perdue School, making the Chile semester an ideal choice for junior and senior business majors. All business students should contact the Perdue School of Business for more information before applying for the Salisbury Abroad: Chile semester program.

Spanish Studies: Students can complete coursework toward the minor and major in Spanish at SU during a semester in Chile. All upper-level courses count toward the minor and the major. Courses are offered in Spanish.

Latin American Studies: Students can complete a maximum of four or five of courses required toward the interdisciplinary Latin American studies minor at SU with one semester in Chile. Courses are offered in English and/or Spanish. For more information on the Latin American Studies Minor including a checklist, see the Area Studies Minor website.



ESTIMATED BUDGET	
MARYLAND RESIDENT	NON-MARYLAND RESIDENT
Tuition and Fees \$5,022	Tuition and Fees \$10,055
Host Family Room & Board \$4,750	Host Family Room & Board \$4,750
Health Insurance \$99	Health Insurance \$99
Subtotal (billable by SU): \$9,871	Subtotal (billable by SU): \$14,904
Personal Expenses \$2,000	Personal Expenses \$2,000
International Airfare \$1,200	International Airfare \$1,200
Passport Fees \$175	Passport Fees \$175
Visa Fees \$300	Visa Fees \$300
Subtotal (Other): \$3,675	Subtotal (Other): \$3,675
Total Est. Cost: \$13,546	Total Est. Cost: \$18,297

GRADES AND CREDITS

Full-time equivalent requirement: All students are responsible to make sure they are taking the number of courses/modules that are equivalent to 12 SU credits (or more) during their study abroad semester (fall or spring) at the host institution.

Transfer Credits: Students on this program earn transfer credits. Students must earn the equivalent of C or better



in the host institution’s program. No SU GPA is calculated.

HOST INSTITUTION

The Universidad Adolfo Ibanez was founded in 1953 as the Escuela de Negocios de Valparaíso by Pedro Ibáñez Ojeda. It is now named in honor of the father of the founder, Adolfo Ibáñez Boggiano. It was the first business school in Chile and Latin America. From those early roots, the UAI has grown to become a renowned institution with 6,300 undergraduate and 2,000 graduate students. The business school continues to be one of the highest ranked in all of Latin America. Now, students pursue diverse academic careers in the social sciences and liberal arts in addition to business.

HOUSING

Students live with a Chilean host family and experience the hospitality of Latin American culture firsthand. All homestays also include full board. The host families play an active role in providing a rich intercultural and

personal experience for Salisbury Abroad: Chile students.

CITY OF VIÑA DEL MAR

Chile is a beautiful South American nation with a rich cultural history. It is world-renown for its ski resorts in the snow-capped Andes mountains and its popular wines cultivated in the shadows of these same mountains. The city of Vina del Mar, with a population of just over 300,000, is located approximately one and a half hours from the capital of Santiago and is a popular Pacific Coast beach resort. It is famous within Chile for its long, white, sandy beaches that stretch along the Pacific coast in this central Chilean city. Recognized by many Chileans as one of the most livable Chilean cities, Vina del Mar is also known for its gardens and green spaces. It enjoys good security and a temperate climate. Infrastructure within Chile is well-developed and there are opportunities to explore the many facets of this Latin American nation during a semester of study.



City: Viña del Mar
Population: 324,800
Language of Instruction:
English and Spanish
Currency: Chilean pesos
Host Institution:
Universidad Adolfo Ibáñez

SAMPLE OF AVAILABLE COURSES

Business in Latin America (English):

- Economic Development in Latin America: Milestones and Crisis
- Sustainable Business in Latin America
- Marketing Trends and Strategies in Latin America
- International Business: Doing Business in Latin America
- Strategic Leadership

Latin American History and Culture (English):

- Latin American Culture and Identity
- Human Rights in Chile — A Historical Perspective
- Socialism, Capitalism and Communism in Latin America
- Latin America in the Age of Globalization
- Latin America on Film

Spanish Language:

- Español Básico: Gramática
- Español Básico: Comunicación
- Español Intermedio: Gramática
- Español Intermedio: Comunicación
- Fonética del Idioma Español
- Español Avanzado: Negocios
- Español Avanzado: Cultura Chilena
- Gramática Avanzada
- Introducción a los Géneros Literarios

Salisbury Abroad Exchange: Anqing Normal University

HIGHLIGHTS

- Immerse yourself in Chinese culture and dramatically improve your Chinese language proficiency
- Spend a fall or spring semester, or a year, in the beautiful city of Anqing – near the heart of ancient China
- Receive Chinese, modern foreign language and history credits for classwork
- Live in a residence hall on campus



The Salisbury Abroad: China program offers students the opportunity to spend a semester in one of the world's most ancient civilizations and one of the 21st century's political and economic powerhouses. SU students study Chinese language alongside courses in Chinese History and Culture in English in the ancient and modern city of Anqing, Anhui province. Central China is an ideal location to reveal the secrets of this powerful nation. Traditional ancient China continues to thrive in the region (several scenes from the film *Crouching Tiger, Hidden Dragon* were filmed not far away) alongside the bustling activity of post-modern capitalist China. Students pay their regular SU tuition and fees and the equivalent of room and board at SU for the same services in China. You just add in the airfare and some spending money.

ELIGIBILITY

Admission is competitive and enrollment is limited.

CLASSES

All students take two courses of intensive Chinese language alongside courses in English on Chinese history and culture for a total of 16 SU credits. Students earn Salisbury credits and contribute to their SU

GPA as if they were studying in Salisbury for the semester (rather than simply receiving transfer credits). Two of the courses can be applied to General Education credits. All of the courses on the Salisbury Abroad: China program can be applied to the interdisciplinary minor in East Asian studies.

GRADES AND CREDITS

Full-time equivalent requirement:

All students are responsible to make sure they are taking the number of courses/modules that are equivalent to 12 SU credits (or more) during their study abroad semester (fall or spring) at the host institution.

Co-Op Program Credits: Students on this program are assigned grades and credits by the host institution. SU transfers credits and grades. SU GPA is calculated.

HOST INSTITUTION

Anqing Normal University is a comprehensive university of approximately 15,000 students offering undergraduate degrees in 39 majors and four different graduate degrees in areas as disparate as humanities, education, economics and science. The University has a long and illustrious history. In 1897, the Jing Fu Academy still in use. The new



Academy of Classical Learning (established in 1652) moved to Anqing, marking the beginning of the University's history in Anqing. Over the next 100 years the University evolved through many changes until the founding of the Anqing Teachers College in 1980. The older Linghu campus remains on the southern bank of Linghu Lake with buildings from the original Jing Fu Academy still in use. The new

Longshan campus was opened in 2004 and is located in the Town of Great Dragon Mountain in the northern suburbs of Anqing. It is the largest gated university campus in Anhui Province. The campus is built around Shuanglong Lake with five bridges of different architectural styles crossing the lake. More information and photos of the campus are available at the University's English-language website.



City: Anqing, China
Population: 5,311,000
Language of Instruction: Chinese, English
Currency: Chinese Yuan Renminbi
Host Institution: Anqing Normal University

ESTIMATED BUDGET

MARYLAND RESIDENT

Tuition and Fees
\$5,022

Housing
\$3,475

ISIC Premium
Health Insurance
\$99

Subtotal (billable by SU):
\$8,596

Partial Board
\$1,300

Personal Expenses
\$2,000

International Airfare
\$1,600

Passport Fees
\$175

Visa Fees
\$100

Subtotal (Other):
\$5,175

Total Est. Cost:
\$13,771

NON-MARYLAND RESIDENT

Tuition and Fees
\$10,055

Housing
\$3,475

ISIC Premium
Health Insurance
\$99

Subtotal (billable by SU):
\$13,629

Partial Board
\$1,300

Personal Expenses
\$2,000

International Airfare
\$1,600

Passport Fees
\$175

Visa Fees
\$100

Subtotal (Other):
\$5,175

Total Est. Cost:
\$18,804

HOUSING

Students on the Salisbury Abroad: Anqing, China, program live in a modern, single-occupancy, on-campus apartment alongside international faculty on the new gated Longshan campus. The apartments have private baths, a private washing machine, tv and a small kitchenette with microwave, hot pot and electric skillet.

PROGRAM TRAVEL

Students fly into Shanghai before continuing on to Anqing. Throughout the semester, there are ample opportunities for travel anywhere in China. Anqing airport offers flights throughout the country. The capital of Anhui province, Hefei, is two hours away by bus. From Hefei, low-cost, high-speed rail service is available to the historic former capital of Nanjing and to Shanghai. Anqing itself is full of opportunities to discover both the new and the traditional China. City attractions include the Huanmei Opera, Zhengfeng Pagoda and Yingjiang Temple. In the Anhui countryside within a day's travel from Anqing, students can visit Mount Huangshan, famous for its towering pines and hot springs; Mount Jiuhua, one of four holy Buddhist mountains in China; and Mount Tian Zhu, also a well-known scenic spot.

CITY OF ANQING

The city of Anqing was originally founded during the Han Dynasty, 200 BC. For 170 years starting during the Qing Dynasty in the mid 1700s through the early years of the Peoples Republic, Anqing was the capital city and the center of Anhui provincial politics, economy and culture. Anqing is home to one of four ancient



operatic traditions in China, the Huangmei Opera. The Huangmei Opera inspired another of the famous traditions, the Peking Opera. Today, Anqing is a bustling metropolis of six million. It is strategically located in the south western part of Anhui province, at the central, lower reaches of the Yangtze River, where the three provinces – Anhui, Hubei and Jiangxi – meet. Anqing is a garden-like Chinese city with a rich national historical and cultural legacy. In addition to the Huangmei Opera tradition, Anqing is a regional Buddhist center for central China, attracting Buddhist faithful from hundreds of miles in all four directions to the Yingjiang Temple overlooking the Yangtze River. You can read more about Anqing at the Anhui province's official website.

MARYLAND SISTER STATES PROGRAM

The State of Maryland and the province of Anhui, China, have enjoyed a long

relationship as Sister States dating back to 1980. The Sister State relationship is managed by the Office of the Maryland Secretary of State. The Maryland-Anhui relationship is the oldest of Maryland's 10 Sister State relationships. SU is proud to play a small role in the cultural, educational, civic and commercial exchange that the Sister State Program seeks to cultivate. For more information on the Maryland Sister States Program, see the program website.

SAMPLE OF AVAILABLE COURSES

Choose two of the following (based on previous experience):

- CHIN 101: Elementary Mandarin I (4 credits)
- CHIN 102: Elementary Mandarin II (4 credits)
- CHIN 201: Intermediate Mandarin I (4 credits)
- CHIN 202: Intermediate Mandarin II (4 credits)

Plus take both of the following (in English):

- HIST 362: Chinese Civilization (4 credits)
- MDFL 248: Intermediate Mandarin Readings in Chinese Society (4 credits)

Note: Students who have completed CHIN 202, take either 4 or 8 credits of:

- MDFL 399: International Field Study - Intensive Chinese Language (4 or 8 credits)

And then choose from:

- MDFL 399: International Field Study - Chinese Calligraphy (4 credits)
- MDFL 399: International Field Study - Chinese Painting (4 credits)
- MDFL 399: International Field Study - Huangmei Opera (4 credits)
- MDFL 399: International Field Study - Martial Arts (4 credits)



Salisbury Abroad Exchange: **Universidad del Norte**

HIGHLIGHTS

- Salisbury University students can study at one of Columbia’s leading international universities
- Immerse yourself in Colombian culture in the fall or spring semester

The Universidad del Norte (UniNorte) is one of the top-ranked universities in Colombia and in the Latin American region. With an estimated 14,000 students enrolled, UniNorte offers programs at the undergraduate and graduate levels. The School of Engineering is one of only three in Latin America to be fully ABET accredited in all undergraduate engineering disciplines. The English Language Institute is the only one of its kind in Latin America that is fully accredited by the U.S.-based Commission on English Language Program Accreditation (CEA).

ELIGIBILITY

- Admission is competitive and enrollment is limited.

CLASSES

Exchange students (undergraduate) are required to take at least 12 credits per semester. Students may spend either the fall or spring semester at UniNorte. SU fee-based study abroad students may select modules in a wide variety of disciplines including: music, economics/business, journalism, screen media, English, psychology, history,

political science, social anthropology, drama, sociology and sport sciences. Availability of classes is dependent upon the course schedule of each semester.

CREDIT TYPE

Transfer Credits: This program is based on Articulated Transfer Credits. You take classes at your host institution abroad, and while you are abroad, you will be enrolled in a place-holder course at Salisbury University. The courses that you will take abroad must be pre-approved for transfer credits before you go. After completion of the program, we will post your credits as transfer credits if you received a grade of C or better at your host institution. These credits do not count toward your grade point average at Salisbury University. Transcripts from semesters abroad typically arrive two-three months after the end of the semester abroad. Transfer credits cannot be posted in GullNet until after transcripts arrive.

HOUSING

UniNorte has a buddy system program, consisting of a group of Uninorte students who guide SU students both academically and culturally to help you through the



ESTIMATED BUDGET			
MARYLAND RESIDENT		NON-MARYLAND RESIDENT	
Tuition	\$5,022	Tuition	\$10,055
Mandatory Health Insurance	\$99	Mandatory Health Insurance	\$99
Subtotal (billable by SU):	\$5,011	Subtotal (billable by SU):	\$10,154
International Airfare	TBA	International Airfare	TBA
Housing	TBA	Housing	TBA
Board	TBA	Board	TBA
Passport Fees	\$175	Passport Fees	\$175
Student Visa	TBA	Student Visa	TBA
Personal Expenses	\$1,500	Personal Expenses	\$1,500
Subtotal (Other):	TBA	Subtotal (Other):	TBA
Total Est. Cost:	TBA	Total Est. Cost:	TBA
See this program's budget online for up-to-date estimates			



adaptation process on campus and in Barranquilla. Along with your buddy, the UniNorte staff help you with your housing process through their database of contacts. SU students can choose to live either in a boarding house, with a family or rent an apartment with other international students. UniNorte also has an airport pick-up system (Ernesto Cortissoz in Soledad) to take SU students to their accommodations.

CITY OF BARRANQUILLA
UniNorte is located in the northern Colombian state of Atlantico where the Magdalena River pours from the interior

highlands into the Caribbean Sea. The city of Barranquilla is a bustling port city that is world famous for its rich, living-cultural tradition of carnival during the spring semester. Barranquilla is the hometown of global media stars Shakira and Sophia Vergara and celebrates the “costeño” lifestyle that blends poetry, music, dance and food among the many immigrant groups that have defined this port city for centuries. The Nobel Prize-winning novelist Gabriel Garcia Marquez, who kept a residence in the neighboring city of Cartagena, set many of his stories in the historical streets of Barranquilla.

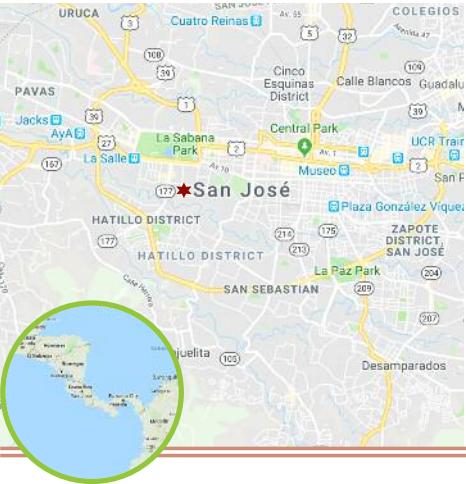
Columbia

City: Barranquilla
Population: 1,232,766
Language of Instruction: English, Spanish
Currency: Colombian peso
Host Institution: Universidad del Norte



SAMPLE OF AVAILABLE COURSES

- General Education:**
- Costa Rica and World Affairs
 - Expressions of the Human Spirit
- Business Studies:**
- Principles of Marketing
 - Elements of Microeconomics
 - Marketing Management
 - Corporate Finance
 - Managerial Skills Development
 - Information Systems Management
 - International Relations
 - Contemporary Latin American History
 - Costa Rican Foreign Policy
 - The Costa Rican Political System
 - Costa Rica and World Affairs
 - Globalization, Environment and Human Development
 - International Organizations
- Spanish Studies:**
- Elementary Spanish
 - Intermediate Spanish
 - Spanish Writing and Style
 - Advanced Spanish



Salisbury Abroad Direct Enroll:

Universidad Latinoamericana de Ciencia y Tecnología

HIGHLIGHTS

- Earn credits in business, Spanish, Latin American studies or international studies
- Take courses taught in English that are integrated into many majors at SU
- Study in Costa Rica in the fall or spring semester for about the same cost as a semester at SU
- Live with a host family to gain a richer understanding of Costa Rican culture and improve your Spanish
- Gain insights into Central America while living in San José, the capital of Costa Rica

The Salisbury Abroad: Costa Rica program allows students to spend a semester in Costa Rica and choose from a selection of courses taught in English in business and/or Latin American studies as well as a wide range of courses taught in Spanish on Spanish language, culture and literature. The cost of the program for tuition, room and board with a Costa Rican family is equivalent to the costs for one semester in Salisbury.

Costa Rica is a stunning Central American nation with coastlines on the Pacific and the Caribbean. Although usually known for its beaches, Costa Rica also offers a great variety of landscapes with volcanoes and rainforest, as well as a vast biodiversity. The university is located in Barrio Tournón, a nice neighborhood within walking distance to downtown San José, the capital city of Costa Rica.

ELIGIBILITY

- Admission is competitive and enrollment is limited.
- Students will be admitted on a rolling basis until the program is full. Once the program is full, accepted students will be placed on a waiting list. The application deadline for spring semester is October 1 and for fall semester is March 1.

- Business students should consult with the Perdue School of Business prior to applying to the program.

CLASSES

Students may spend a semester in Costa Rica and choose from a wide selection of courses taught in English in business studies and in Latin American studies, as well as a wide range of courses taught in Spanish on Spanish language, culture and literature. Students take four courses as part of the exchange but can take additional courses for an extra fee. So, business studies students can easily count their upper-level business courses for their majors in the Perdue School (but should contact the Perdue School of Business for more information before applying). Spanish studies students can complete coursework toward the minor and major in Spanish, and Latin American studies students can complete a maximum of four out of the five courses required toward the interdisciplinary Latin American Studies Minor Program at SU with one semester in Costa Rica. Courses are offered in English and/or Spanish.



City: San José
Population: 288,050
Language of Instruction: English, Spanish
Currency: Costa Rican Colón
Host Institution: Universidad Latinoamericana de Ciencia y Tecnología (ULACIT)

ESTIMATED BUDGET

MARYLAND RESIDENT

Tuition and Fees
\$5,022

Room and Board
\$2,500

ISIC Premium Health Insurance
\$99

Subtotal (billable by SU):
\$7,621

Personal Expenses
\$2,000

International Airfare
\$600

Passport Fees
\$175

Subtotal (Other):
\$2,775

Total Est. Cost:
\$10,396

NON-MARYLAND RESIDENT

Tuition and Fees
\$10,055

Room and Board
\$2,500

ISIC Premium Health Insurance
\$99

Subtotal (billable by SU):
\$12,654

Personal Expenses
\$2,000

International Airfare
\$600

Passport Fees
\$175

Subtotal (Other):
\$2,775

Total Est. Cost:
\$15,429



GRADES AND CREDITS

Full-time equivalent requirement:

All students are responsible to make sure they are taking the number of courses/modules that are equivalent to 12 SU credits (or more) during their study abroad semester (fall or spring) at the host institution.

Transfer Credits: Students on this program earn transfer credits. Students must earn the equivalent of C or better in the host institution's program. No SU GPA is calculated.

HOST INSTITUTION

The Universidad Latinoamericana de Ciencia y Tecnología (ULACIT) is a private bilingual university founded in 1987. Although it is a relatively new institution, ULACIT is recognized as one of the best

universities in the region and one of the most prestigious in Latin America. The University offers its nearly 3,000 students (with about 15 percent international students) more than 69 different majors from which to choose.

HOUSING

Students live with carefully selected Costa Rican families and experience the local culture firsthand. All homestays also include full board (three meals a day) as well as airport pick-up and drop-off. The stay with a host family provides an incredible way to gain insight into Costa Rican life and tradition, and it is a great addition to the learning experience.

CITY OF SAN JOSÉ

San José is the capital city of Costa Rica. Although the San José Canton has a

Costa Rica

SAMPLE OF AVAILABLE COURSES

General Education:

- Costa Rica and World Affairs
- Expressions of the Human Spirit

Business Studies:

- Principles of Marketing
- Elements of Microeconomics
- Marketing Management
- Corporate Finance
- Managerial Skills Development
- Information Systems Management
- International Relations
- Contemporary Latin American History
- Costa Rican Foreign Policy
- The Costa Rican Political System
- Costa Rica and World Affairs
- Globalization, Environment and Human Development
- International Organizations

Spanish Studies:

- Elementary Spanish
- Intermediate Spanish
- Spanish Writing and Style
- Advanced Spanish

population of just over 288,000, the metropolitan area counts a third of the country's population, and the city center attracts more than a million people daily but is still one of the safest cities in the region. San José lays in the Central Valley region of the country, between volcanoes in the north and the Talamanca Mountains in the south. In addition to being the nation's center for political and economic activities, San José is one of the country's predominant cultural centers as well as a major transportation hub for the rest of the country.



Salisbury Abroad Exchange: **University of Greenwich**

HIGHLIGHTS

- Experience the exquisite and cosmopolitan city of London
- Study at the world-class University of Greenwich with students from around the globe
- SU students can participate in the exchange and study for the same price as a semester at SU
- Open to students of all majors in the fall or spring semester

The sights, sounds and tastes of the U.K. are varied. Whether you enjoy exploring cities or prefer to get out into the countryside, the U.K. has something to offer you. The U.K.'s cafés and restaurants serve cuisines from around the world as well as traditional British food such as fish and chips and Sunday roast. The U.K. embraces people from all over the world and has a wide and vibrant multicultural society. This is reflected in the U.K.'s diverse religious beliefs, music, events and even fashion.

CLASSES

SU students can spend a semester or year studying a variety of disciplines, and they will continue to pay their tuition and fees at SU, as always, and are charged no tuition at Greenwich. Regardless of major, SU students are able to spend a semester or year at Greenwich as fee-paying study abroad students.

Students may spend either the fall or spring semester at University of Greenwich. SU fee-based study abroad students may select modules in a wide variety of disciplines. Availability of classes is dependent upon the course schedule of each semester. Salisbury University students majoring in mathematics / computer science can engage with the renowned Global Cyber

Security Program at the University of Greenwich, which has pre-approved the curriculum of these B.S. programs at Salisbury University. So, SU students in mathematics / computer science can spend a full semester during the junior or senior year, and then apply to do a one-year M.S. program in global cyber security, as per SU's 4+1 B.S./M.S. program with University of Greenwich.

GRADES AND CREDITS

Full-time equivalent requirement:

All students are responsible to make sure they are taking the number of courses/ modules that are equivalent to 12 SU credits (or more) during their study abroad semester (fall or spring) at the host institution.

Transfer Credits: Students on this program earn transfer credits. Students must earn the equivalent of C or better in the host institution's program. No SU GPA is calculated.

HOST INSTITUTION

University of Greenwich was founded in 1890. The home campus is the historic Greenwich Old Royal Naval College on the bank of the River Thames and next to the Royal Park. The iconic Greenwich Maritime



ESTIMATED BUDGET

MARYLAND RESIDENT

Tuition and Fees*
\$5,022

ISIC Premium
Health Insurance
\$99

**Subtotal
(billable by SU):
\$5,121***

Housing
\$3,475
Board
\$2,500

Personal Expenses
\$2,000

International Airfare
\$1,200

Passport Fees
\$175

Visa Fees
\$0

**Subtotal (Other):
\$9,350**

**Total Est. Cost:
\$14,471**

NON-MARYLAND RESIDENT

Tuition and Fees
\$10,055

ISIC Premium
Health Insurance
\$99

**Subtotal
(billable by SU):
\$10,154**

Housing
\$3,475
Board
\$2,500

Personal Expenses
\$2,000

International Airfare
\$1,200

Passport Fees
\$175

Visa Fees
\$0

**Subtotal (Other):
\$9,350**

**Total Est. Cost:
\$19,504**

World Heritage Site receives millions of tourists each year who come to visit the Royal Observatory meridian line, *Cutty Sark* ship, historic market, museums and, of course, the ORNC. The big plus of living at a campus-based university is that the majority of your needs are catered for on site, including the library and computer centre, academic and teaching buildings, welfare services, catering and social facilities, and even the halls of residence, if you are living in university accommodation.

HOUSING

Greenwich provide approximately 2,400 places in seven halls on or near to its

campuses at Avery Hill, Greenwich and Medway. Greenwich offers special circumstances for disabled students, students with medical conditions, students leaving care, and students on short courses.

COST

Sociology and communications students that are Maryland residents are automatically considered for the competitive exchange spot(s). If selected, students pay their regular semester tuition costs. In-state students of all other programs and students not selected for the exchange pay approximately the out-of-state tuition amount.



City: London
Population: 8,817,300
Language of Instruction: English
Currency: Euro
Host Institution: University of Greenwich

SAMPLE OF AVAILABLE COURSES

Business and Management:

- Leadership and Enterprise
- Principles and Practice of Marketing
- Business Ethics and Corporate Social Responsibility
- Introduction to Economics for Business

Sociology:

- Applying Sociology
- Researching Society and Culture
- Migration and Citizenship

International Relations:

- Introduction to Politics and International Relations
- Politics and Development in Asia and Africa
- Inequality and Social Change

English:

- Literature in Context: Fiction Since 1800
- Shakespeare, Then and Now



Salisbury Abroad Exchange: University of Tartu

HIGHLIGHTS

- Study in beautiful Estonia, strategically located within northern Europe
- Take classes in biology, chemistry, math, computer science, law, philosophy, history, political science, English, psychology, Estonian and Russian language, education, business, accounting, economics, and more
- Live and study in Europe in the fall or spring semester for a fraction of many other destinations
- Live in residence halls with students from all around the globe

Salisbury University and the University of Tartu have made special arrangements for SU students to spend a semester studying in the historical northern European college town of Tartu, Estonia. Estonia is strategically located on the edge of the Baltic Sea in northeast Europe. Helsinki, Finland; Stockholm, Sweden; and St. Petersburg, Russia are all less than a one hour flight from the capital city of Tallinn. The Baltic region is a growing economic powerhouse in Northeastern Europe, enjoying vibrant democracies and high standards of living. The historical and cultural meeting of Europe and the West with Russia and the East makes Estonia a fascinating destination for a semester abroad. Admission is open to non-SU students as well.

ELIGIBILITY

- Admission is competitive and enrollment is limited.
- Must be a registered student at Salisbury University.

CLASSES

Students may spend either the fall or spring semester at University of Tartu. Students can study Baltic Region sea studies in the Centre for Baltic Studies, European Union studies in the EuroCollege or Eastern

European studies in the EuroCollege.

Students from the Perdue School of Business can take a selection of courses in business, accounting, economics and other disciplines from the faculty of business and economics.

Students can earn four or five courses for the interdisciplinary minor in European studies in one semester on the Salisbury Abroad: Estonia program.

All of the courses are taught in English.

GRADES AND CREDITS

Full-time equivalent requirement:

All students are responsible to make sure they are taking the number of courses/modules that are equivalent to 12 SU credits (or more) during their study abroad semester (fall or spring) at the host institution.

Transfer Credits: Students on this program earn transfer credits. Students must earn the equivalent of C or better in the host institution's program. No SU GPA is calculated.

HOST INSTITUTION

The University of Tartu was founded in 1632 by the King of Sweden Gustav II Adolph. It is the largest and most comprehensive university in Estonia,



ESTIMATED BUDGET

MARYLAND RESIDENT

Tuition and Fees
\$5,022

Housing
\$3,475

ISIC Premium
Health Insurance
\$99

**Subtotal
(billable by SU):
\$8,596**

Board
\$1,500

Personal Expenses
\$2,000

International Airfare
\$1,400

Passport Fees
\$175

Mandatory Estonian
Health Insurance
\$200

**Subtotal (Other):
\$5,275**

**Total Est. Cost:
\$13,871**

NON-MARYLAND RESIDENT

Tuition and Fees
\$10,055

Housing
\$3,475

ISIC Premium
Health Insurance
\$99

**Subtotal
(billable by SU):
\$13,629**

Board
\$1,500

Personal Expenses
\$2,000

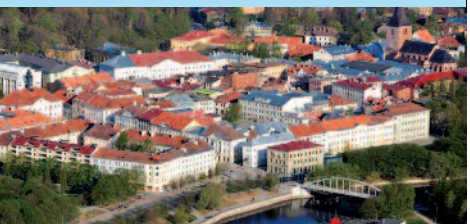
International Airfare
\$1,400

Passport Fees
\$175

Mandatory Estonian
Health Insurance
\$200

**Subtotal (Other):
\$5,275**

**Total Est. Cost:
\$18,904**



producing more than 70% of the Ph.D.'s in the country. Ranked as one of the top 600 universities in the world, University of Tartu is one of the most venerable centers of education and research in northern Europe.

Tartu is the second largest city in Estonia, with a population of just over 100,000. Twenty percent of the residents of Tartu are college students. Nestled on the banks of the River Emajõgi, Tartu is considered the cultural and intellectual center of the nation. Because of the concentration of college students in this historic town, Tartu is known for its active nightlife with clubs, bars and restaurants for the young population. You can view several Tartu University videos on www.youtube.com/tartuuniversity.

HOUSING

While in classes in Tartu, students will stay in a double room at the student dormitory in the center of the town. Each double room is part of a quad of double rooms that share a common kitchen facility (refrigerator, sink, stove, oven), bathrooms and showers in apartment-style living. Board is not included with housing. However, there are grocery stores in close proximity to the dormitory. Housing is included in the program costs.

PROGRAM TRAVEL

Program travel on the Salisbury Abroad: Tartu, Estonia program depends on the courses in which a student is enrolled. Some courses include excursions others do not. Excursions associated with specific courses involve costs not included with the program fee. Past course excursions have included St. Petersburg, Russia; the capital of Estonia, Tallinn; and the third largest city in Estonia, Narva, located on the Estonian-Russian

SISTER CITIES INTERNATIONAL

Salisbury, MD, and Tartu, Estonia, have enjoyed a long and cordial relationship as Sister Cities through the Sister Cities International Organization. The relationship between Salisbury and Tartu is part of a larger relationship between the State of Maryland and Estonia that dates back to the fall of the Berlin wall and the re-establishment of democracy in Estonia in 1991.



SAMPLE OF AVAILABLE COURSES

Business:

- Microeconomics
- Macroeconomics
- Marketing Management
- Business Environment in the Baltic Sea Region

International Relations:

- Geopolitics
- Sovereignty and Global Order
- EU Enlargement, Transition and Neighborhood Policy

Computer Science:

- Introduction to Data Science
- Software Engineering
- Computer Graphics Seminar
- Mobile Application Development
- Large-Scale Data Processing in the Cloud

Estonian Language:

- Estonian for Beginners

Pending approval from the respective academic department.

City: Tartu, Estonia

Population: 97,300

Language of Instruction: English (opportunity to study Estonian and Russian)

Currency: Euro

Host Institution: University of Tartu





Salisbury Abroad Direct Enroll: Université Lumière-Lyon 2

HIGHLIGHTS

- Develop your knowledge of French literature and culture
- Explore Lyon, a vibrant and charming French city with a rich history and beautiful architecture, and discover France’s cultural richness
- Live with a host family for a complete immersion experience
- Experience the best of French cuisine in Lyon, the gastronomic capital of France
- Travel easily throughout France and to bordering European countries during your stay in France

ELIGIBILITY

Admission is competitive and enrollment is limited. Students will be admitted on a rolling basis until the program is full. Once the program is full, accepted students will be placed on a waiting list.

A minimum of a 2.5 GPA is required to apply to the Salisbury Abroad: France program. Students with a lower GPA will be asked to provide additional application documents and will be accepted on a case-by-case basis.

COURSES

Students will take courses for a full academic semester at the Centre International des Etudes Françaises (CIEF), a language center located in the Université Lumière-Lyon 2 that offers a large array of French language and culture courses for non-native speakers. Before the beginning of the semester, students will be assigned a level and a course track depending on their performance on a placement exam taken at the CIEF.

In addition, students will share their experience in a public oral presentation in English upon their return at SU.

Course load at the CIEF is 210 hours/semester. The experience of living autonomously in a foreign country and the

preparation required for the oral presentation assignment provide additional learning hours.

GRADING

Taking into account students’ grades received at the CIEF and for their oral presentation, they will be able to earn up to 16 credits (four credits/course) and validate up to four SU courses. Students majoring or minoring in French can apply eligible courses toward the completion of their French degree.

Courses for which students will receive SU credits will be determined individually. The selection will take into account the student’s French course level at SU, their level determined by the CIEF’s language placement and their individual academic needs to complete their French minor/major. Please note that students do not take literature courses in Lyon and will therefore not be able to receive credits for SU French literature courses.

INTEGRATED SU DEGREE PROGRAMS

French major/minor: Students may be able to count several or all of the courses taken in the Salisbury Abroad: France program as part of their French minor or major. For more information on the French

minor and major, including a checklist, students should see the Department of Modern Languages and Intercultural Studies website. French minors and majors should contact their academic advisor in French for more details as to how the credits can count in their program.

International studies major/minor: Students may be able to count several of the courses taken in the Salisbury Abroad: France program as part of the international studies major or minor. For more information on the international studies major or minor, including a checklist, students should see the Department of Political Science website.

European studies minor: Students may be able to count several of the courses taken in the Salisbury Abroad: France program as part of their European studies minor. For more information on the European studies minor, including a checklist, students should see the Area Studies Minors Program website.

GRADES AND CREDITS

Full-time equivalent requirement: All students are responsible to make sure they are taking the number of courses/modules that are equivalent to 12 SU credits (or more) during their study



ESTIMATED BUDGET	
MARYLAND RESIDENT	NON-MARYLAND RESIDENT
Tuition and Fees \$5,022	Tuition and Fees \$10,055
Host Family and Partial Board \$3,825.00	Host Family and Partial Board \$3,825.00
Mandatory French Liability Insurance \$230	Mandatory French Liability Insurance \$230
Subtotal (billable by SU): \$9,176	Subtotal (billable by SU): \$14,027
Personal Expenses \$2,000	Personal Expenses \$2,000
International Airfare \$1,300	International Airfare \$1,300
Passport Fees \$175	Passport Fees \$175
Student Visa \$300	Student Visa \$300
Subtotal (Other): \$3,775	Subtotal (Other): \$3,775
Total Est. Cost: \$12,951	Total Est. Cost: \$17,802



City: Lyon, France
Population: 513,275
Language of Instruction: English
Currency: Euro
Host Institution: Centre International des Etudes Françaises (CIEF), a language center located in the Université Lumière-Lyon 2



abroad semester (fall or spring) at the host institution.

Co-Op Program Credits: Students on this program are assigned grades and credits by the host institution. SU transfers credits and grades. SU GPA is calculated.

HOST INSTITUTION AND CITY

The Université Lumière-Lyon 2 is one of the three universities that comprise the Lyon University System. Its two campuses offer a wide variety of undergraduate and graduate programs in arts, humanities and social sciences to about 30,000 students. The Centre International des Etudes Françaises (CIEF) is the university’s language center. It is set on the oldest campus, which is composed of old beautiful buildings along the Rhône River. It is centrally located and easily accessible with safe and affordable public transportation. The CIEF, which specializes in French language and culture courses for non-native speakers of all levels, is a member of the Association of

Directors of University Centers for French Studies for Foreigners (Association des directeurs de centres universitaires d’études françaises pour étrangers), a renowned French organization whose members follow strict quality guidelines. The CIEF counts around 100 instructors and offers to its 1,400 students an intimate and supportive learning community with a course enrollment of 20 students maximum. The CIEF also offers activities, excursions and trips at reduced or no cost for its students through its “centre d’animation.” Past events included concert, play and movie nights, museum and city guided tours, excursions to a cheese farm and winery, and trips to Paris, the French Riviera, and Geneva (Switzerland).

HOUSING

Students will live and eat most of their meals in selected French host families that are located at a short distance from the university and the city’s major attractions. SU has partnered with Lyon Expat

SAMPLE OF AVAILABLE COURSES

Possible courses validated include*:

- French 290: Intermediate Francophone Topics (does not count toward the minor – can be counted twice for up to 8 credits total)
- French 300: Topics in French (can be counted twice for up to 8 credits total)
- French 310: French Grammar and Composition
- French 312: French Conversation
- French 410: Advanced Francophone Topics (can be counted twice for up to 8 credits total)

Services to provide homestays for SU students.

CITY OF LYON

Lyon is an affordable city that offers a large array of cultural events and venues. It is renowned for its film festivals and theater productions and has numerous museums such as the Museum of Fine Arts, the Museum of Contemporary Art, the Gallo-Roman Museum, the Lumière Film Institute and the Resistance and Deportation History Center. Lyon has also been recognized for its distinctive history and architecture by being added to the UNESCO World Heritage site list. The city’s culinary legacy is equally as rich. It is embodied in the popular bouchons lyonnais, a type of affordable bistrots that serve Lyon’s specialties. Lyon’s central geographical position makes it easy and convenient to travel to the rest of France and to countries nearby.



Salisbury Abroad Exchange: **Grenoble Ecole de Management**

HIGHLIGHTS

- Study at the world-renowned Grenoble Ecole de Management in the fall or spring semester
- Business students who study there for one year have the unprecedented opportunity to earn two bachelor's degrees from two terrific institutions (Salisbury University and Grenoble Ecole de Management) in only four years
- Live at the foot of the Alps in France in Grenoble, France — selected as best city to study in France (*L'Étudiant* magazine)
- Exchange students are able to pay regular tuition costs at Salisbury — at a fraction of a typical study abroad program in France



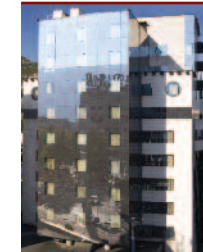
Salisbury University has a long-standing relationship with the Grenoble Ecole de Management. Academic Year 2014-15 marked an exciting development in its long institutional friendship, as SU students were able to obtain a second bachelor's degree from the Grenoble Ecole de Management (GEM) by studying there during their senior year. Business students studying at GEM during their senior year graduate in four years and earn two bachelor's degrees: one from Salisbury and one from Grenoble Ecole de Management. Students may also study at GEM for a single semester, gaining valuable academic and personal experience.

ELIGIBILITY

- Admission is competitive and enrollment is limited
- No prior study of French language required

CLASSES

During a semester at Grenoble, students will take a total of 15 credit modules. The courses offered that comprise the 15 credit modules are different in the fall and spring. At the end of the module, students receive a certificate in international business. Select students may be eligible for admission in



City: Grenoble, France
Population: 162,780
Language of Instruction: English
Currency: Euro
Host Institution: Grenoble Ecole de Management

ESTIMATED BUDGET

MARYLAND RESIDENT	NON-MARYLAND RESIDENT
Tuition and Fees \$5,022	Tuition and Fees \$10,055
ISIC Premium Health Insurance \$99	ISIC Premium Health Insurance \$99
Subtotal (billable by SU): \$5,121	Subtotal (billable by SU): \$10,154
Housing \$3,475	Housing \$3,475
Board \$2,500	Board \$2,500
Personal Expenses \$2,000	Personal Expenses \$2,000
International Airfare \$1,300	International Airfare \$1,300
Passport Fees \$175	Passport Fees \$175
Visa Fees \$125	Visa Fees \$125
Subtotal (Other): \$9,575	Subtotal (Other): \$9,575
Total Est. Cost: \$14,696	Total Est. Cost: \$19,729

the joint degree program, which allows students to earn the Bachelor in International Business from Grenoble and the Bachelor of Science from Salisbury all during a traditional four year degree.

GRADES AND CREDITS

Full-time equivalent requirement: All students are responsible to make sure they are taking the number of courses/modules that are equivalent to 12 SU credits (or more) during their study abroad semester (fall or spring) at the host institution.

Transfer Credits: Students on this program earn transfer credits. Students must earn the equivalent of C or better in the host institution's program. No SU GPA is calculated.

HOST INSTITUTION

Established in 1984, Grenoble Ecole de Management delivers 40 national and international programs from the undergraduate to the doctoral level. The school is one of the very few, worldwide, to hold a triple accreditation (AACSB, EQUIS and AMBA). The school and its programs are ranked in the top 30 Best European Business Schools according to the *Financial Times* and consistently rank among the top 50 business programs worldwide.

HOUSING

SU students studying at Grenoble Ecole de Management live in apartments around the city of Grenoble. GEM provides assistance to find suitable lodging. The



city has a large population of students and researchers on short-term assignments, and as such, there are many opportunities for housing throughout the city. The school also has a mentoring program to help students with various administrative issues.

CITY OF GRENOBLE

Grenoble has a population of 450,000 and the economic importance of this city is second only to Paris. The region is host to several U.S. companies such as Hewlett-Packard, Caterpillar, Sun Microsystems and Becton-Dickinson. There is a tram that runs throughout the city and is a great way to see some of the sights. Visitors can hike up the mountains for beautiful views of the valley below. Only three hours southeast of Paris by high-speed train and one hour from Geneva, Switzerland, Grenoble is the center of the Rhone-Alps region of France. This area is well known for its proximity to many of the great ski resorts in the Alps and was the site of the 1968 Olympic Games.

SAMPLE OF AVAILABLE COURSES

Fall Semester Module — Business:

- International Marketing
- Introduction to Global Strategy
- Ethical Dimensions of International Business
- Innovation Management
- Intercultural Business Skills
- Entrepreneurship
- French language course

Spring Semester Module — Marketing & Advertising:

- International Advertising and Public Relations
- Brand Management
- Digital Marketing
- Sports Marketing and Events Management
- Sustainable Marketing
- French language course

At the end of the module, students would receive a certificate in international business.





Salisbury Abroad Exchange: Hong Kong Baptist University

HIGHLIGHTS

- Study at the highly respected Hong Kong Baptist University in the fall or spring semester
- Exchange students pay regular tuitions costs at Salisbury; a fraction of the cost of a typical study abroad program in Hong Kong
- Study in the heart of Hong Kong, the Asian business and commerce hub
- Live in a residence hall with other international students and local students



ELIGIBILITY

Admission is competitive and enrollment is limited.

HOST INSTITUTION

Hong Kong Baptist University was founded in 1956 as a fully government-funded institution, with a coeducational Christian heritage, within the ambit of the University Grants Committee. It has eight faculties / schools, with 6,800 undergraduate students and 3,800 postgraduate students. HKBU is located in the heart of the Kowloon Peninsula. The School of Business is among the 1% of business schools worldwide accredited by the 3 leading international accreditation bodies focused on business education. The Academy of Visual Arts was ranked among the top 100 art and design schools in the QS World University Rankings in 2017.

CLASSES

For Academic Year 2019-20, only students from the Perdue School of Business are eligible to take classes on the Salisbury Abroad Exchange: Hong Kong Baptist University. Students from the Perdue School of Business should work with their academic advisor to determine course equivalencies for the course they wish to take.

ESTIMATED BUDGET

MARYLAND RESIDENT	NON-MARYLAND RESIDENT
Tuition and Fees \$5,022	Tuition and Fees \$10,055
Mandatory Health Insurance \$99	Mandatory Health Insurance \$99
Subtotal (billable by SU): \$5,121	Subtotal (billable by SU): \$9,862
Housing \$1,100	Housing \$1,100
Meals \$750	Meals 750
Personal Expenses \$1,500	Personal Expenses \$1,500
Activities Organized by Hall Councils \$10 or \$15	Activities Organized by Hall Councils \$10 or \$15
International Airfare \$1,200	International Airfare \$1,200
Passport Fees \$175	Passport Fees \$175
Visa Fees \$250	Visa Fees \$250
Subtotal (Other): \$4,259	Subtotal (Other): \$4,259
Total Est. Cost: \$9,380	Total Est. Cost: \$14,414



GRADES AND CREDITS

Full-time equivalent requirement:

All students are responsible to make sure they are taking the number of courses/modules that are equivalent to 12 SU credits (or more) during their study abroad semester (fall or spring) at the host institution.

Transfer Credits: Students on this program earn transfer credits. Students must earn the equivalent of C or better in the host institution's program. No SU GPA is calculated.

HOUSING

Over 1,700 HKBU students live in the undergraduate halls on campus each year. The rooms are either double rooms or triple rooms. Every two rooms share a common bathroom. The north and south towers of the undergraduate halls are connected by communal rooms.

STUDENT VISA

Generally, the student visa approval process takes six to eight weeks. Students do NOT need to arrange anything with the Chinese embassy/consulate. When a student's visa/permit is approved, HKBU will pay and collect the visa/permit from the Immigration Office, and they will send the visa/permit and arrival instructions to the student's postal address by courier.

CITY OF HONG KONG

Hong Kong is a former British colony that is currently a Special Administrative Region (SAR) of the People's Republic of China, enclosed by the Pearl River Delta and South China Sea. Hong Kong is known for its expansive skyline and deep natural harbor. With a population of over seven million people, it is one of the most densely populated areas in the world. Hong Kong ranks as the third most important leading international financial center, after London and New York City. According to estimates from both UN and WHO, Hong Kong had the longest life expectancy of any region in the world in 2012.

SAMPLE OF AVAILABLE COURSES

Business Classes:

- FINE 2005: Financial Management (FINA 311)
- BUSI 2006: Operations Management (INFO 326)
- ECON 3077: Intermediate Macroeconomics (ECON 312)
- BUSI 3017: International Businesses (ECON 338; ECON 441)
- ECON 3037: Microeconomics (ECON 311)
- ECON 3005: Applied Econometrics (ECON 430)
- MKTG 2005: Marketing Management (MKTG 330)
- Chinese Language (Mandarin/Cantonese)

(Pending approval from the Perdue School)



City: Hong Kong
Population: 7,374,900
Language of Instruction: English
Currency: Hong Kong dollar
Host Institution: Hong Kong Baptist University

Salisbury Abroad: Global Experiences Internship Program

HIGHLIGHTS

- Earn SU credits in the fall or spring semester while interning in major cosmopolitan centers around the world, including Dublin, London, Barcelona, Florence, Milan, Paris, Stockholm, Shanghai and Sydney
- Identify your strengths and plan your professional future while gaining critical global competencies that will help you to thrive in the 21st century global economy
- Access to an extensive network with hundreds of companies and organizations as internship hosts in dozens of different professional industries, with more opportunities opening all the time
- Semester-length internships abroad can cost nearly the same as a regular semester in Salisbury — some leading global cities are more expensive than others, but the cost of the semester interning abroad can be surprisingly close to a semester on SU campus

The Salisbury Abroad: Global Experiences Internship Program can be the culminating experience in your undergraduate program at SU. In many majors, you can apply 4-12 credits of internship toward your major requirements. In addition, you can earn internship credits as free electives that do not count toward your major, minor or General Education, but do count toward the 120 credits required for graduation. In cities like Barcelona, Paris and Florence, you can add a four-credit language course to your semester abroad. In most cases, you can earn a full 12-16 credit semester as a global intern. At the same time, you are living abroad, practicing a new profession, learning about your own professional and personal strengths, and crafting your transition from college student to member of the workforce in the global economy.

ELIGIBILITY

After completing and submitting the SU study abroad application form, students continue the application process directly with Global Experiences.

COURSES

You need the permission of your academic

department in order to earn credits in the Global Experiences Internship Program. The following majors have already identified specific faculty members for you to contact directly about the program:

- **Communication Arts:** Dr. Darrell Mullins
- **Community Health:** Dr. Deneen Long-White
- **Sports and Exercise Science:** Heather Mazzetti

If you are majoring in another area, schedule an appointment with the Study Abroad Advisor, and we will help you find your correct advisor.

In addition to your internship credit, if you intern in Italy, Spain, France or China, you can add four credits of intensive language credit to your semester abroad. If you have never studied the language at all, you can start with the basics. If you have already studied for a few semesters, or if you are majoring or minoring in one of the languages, you can add upper-level elective credit in that language to your semester abroad.

INTEGRATED CURRICULUM

This Global Experiences Internship Program is an integrated education abroad program. This means that you will be directly enrolled in Salisbury University courses in GullNet while you are abroad.

The grades that you earn abroad are Salisbury University grades that count toward your SU GPA. In most cases, you can earn 12-16 credits for a full semester internship abroad. Because the program is integrated into the SU curriculum, all your financial aid can be applied to your credit-bearing internship abroad.

HOST INSTITUTION

Global Experiences is a private company located in Annapolis, MD, specializing in helping young professionals to identify their strengths and build their career development portfolio, while placing them in international internships around the world. Co-Founder and CEO Stephen Reilly is a 1995 graduate of Salisbury University with a degree in communication arts. Stephen and his co-founder, Emily Merson, created Global Experiences nearly two decades ago to help young professionals gain the global competencies that they will need to thrive in the 21st century global economy. Salisbury University is proud to collaborate with Global Experiences to offer this special global internship opportunity.

HOUSING

The program includes furnished student accommodation for the duration of your



ESTIMATED BUDGET	
Estimated cost as shown applies to internships in Barcelona, Spain, and Florence and Milan, Italy.	
MARYLAND RESIDENT	NON-MARYLAND RESIDENT
Tuition and Fees \$5,022	Tuition and Fees \$10,055
Housing \$3,475	Housing \$3,475
International Internship Fee* \$2,383	International Internship Fee* \$0
Mandatory Health Insurance \$99	Mandatory Health Insurance \$99
Subtotal** (billable by SU): \$10,979	Subtotal** (billable by SU): \$13,629
Board \$2,500	Board \$2,500
Personal Expenses \$2,000	Personal Expenses \$2,000
International Airfare \$1,200	International Airfare \$1,200
Passport Fees \$175	Passport Fees \$175
Visa Fees \$100	Visa Fees \$100
Subtotal (Other): \$5,975*	Subtotal (Other): \$5,975*
Total Est. Cost: \$16,954	Total Est. Cost: \$19,604
*International internship fee includes costs for placement and support by Global Experiences as well as cost differential for high cost housing in certain global cities.	
**International internship fee for other cities are as follows: Dublin, Ireland and Sydney, Australia (\$3,383), London, England (\$4,383), and Shanghai, China (\$1,383).	



program. You will live in a shared room in a shared setting with other students near the city center. Global Experiences interns typically either walk or take public transportation to their internship sites and language classes. Global Experiences even helps you to get commuter passes for the bus or train if necessary in your city.

COSTS

Estimated costs can be found on the Estimated Budget table provided. Fees are paid directly to Salisbury University. Costs include all SU tuition and fees, all internship placement fees with Global Experiences, housing, and substantial in-country support provided by Global Experiences, including cultural excursions and networking events.

GRADES AND CREDITS

Full-time equivalent requirement:

All students are responsible to make sure they are taking the number of courses/modules that are equivalent to 12 SU credits (or more) during their study abroad semester (fall or spring) at the host institution.

Integrated Curriculum: Students on this program earn SU grades and SU credits just as if the courses were offered on campus. SU GPA is calculated.

REILLY FAMILY SCHOLARSHIP

Nearly 50 SU students have earned credits interning with Global Experiences since our collaboration began in 2012. In recognition of these excellent SU students, Global Experience Co-Founders Stephen Reilly and Emily Merson privately endowed the Reilly Family Scholarship in 2016. The scholarship is set aside to make the experience of interning abroad even more affordable for those SU students who think that they cannot have such a life-changing experience for financial reasons. No program like this existed at SU when Stephen Reilly graduated in 1995. They are committed to making sure that future SU students always have access to transformational learning experiences like the Global Experiences Internship Program. For more information see the Center for International Education.

APPLY

After completing and submitting the SU study abroad application form, students continue the application process directly with Global Experiences. Students should not apply directly to Global Experiences until after completing the SU study abroad application process.

SAMPLE OF AVAILABLE COURSES

Students earn 12 credits (or 16 credits)

- Communications Internship (CMAT 495), SU credit: 4-8
- Independent Study in Communication Arts (CMAT 492), SU credit: 4
- Independent Research in Communication Arts (CMAT 497), SU credit: 4
- Exercise Science Internship (EXCS 479) SU credit: 10
- Seminar in Exercise Science (EXCS 480) SU credit: 2
- Internship in Community Health (HLTH 480) SU credit: 12
- Internship in Interdisciplinary Studies (IDIS 490) SU credit: 4-8
- Foreign Language (Depending on site) SU credit: 4



Salisbury Abroad Direct Enroll: American Institute of Indian Studies

HIGHLIGHTS

- Study one of a number of Indian languages at different sites throughout India in the fall or spring semester
- Live with local host families for a total immersion experience

Salisbury University has partnered with the American Institute of Indian Studies (AIIS) to offer a world-class opportunity for students to study the diverse languages and cultures of India in the places where those languages are spoken and where the cultures thrive. Salisbury University is the only member of the University System of Maryland (USM) to also be a member of the AIIS consortium of American university partners. Salisbury University students enjoy a unique opportunity within the USM to earn home academic credits for the intensive study of Indian languages and cultures in India in partnership with AIIS. Students from other USM institutions are welcome to apply to participate on the program.

Students with little or no experience in South Asian languages may study during the fall semester only. Students with prior knowledge of South Asian languages may be able to study during the spring semester, full academic year or summer term. These students should contact the faculty director at Salisbury University to confirm eligibility.

ELIGIBILITY

- Admission is competitive and enrollment is limited.
- The application process begins early. Students must apply by November 1 for the

fall semester of the following year, and April 1 for the spring semester of the following year. Students must first apply to Salisbury University and be admitted to the program. Then, students will continue with the application process at AIIS.

CLASSES

In each of the AIIS locations, students earn 16 credits at Salisbury University for intensive study of Indian languages and culture.

GRADES AND CREDITS

Resident Credits: This program has a curriculum that has been integrated into the Salisbury University curriculum. The Study Abroad Office will register you in the Salisbury University courses that you select in your pre-departure registration process. You will take your classes at your host institution and your grades will be posted as Salisbury University grades with Salisbury University grade point average in GullNet. Transcripts and/or grade reports from semesters abroad typically arrive two to three months after the end of the semester abroad. Your Salisbury University grades cannot be posted in GullNet until after your transcripts and/or grade reports arrive.



City: Various sites in India
Language of Instruction: English, various Indian languages
Currency: Indian rupee
Host Institution: American Institute of Indian Studies

ESTIMATED BUDGET

MARYLAND RESIDENT	NON-MARYLAND RESIDENT
Tuition and Fees \$5,022	Tuition and Fees \$10,055
Mandatory Health Insurance \$99	Mandatory Health Insurance \$99
Subtotal (billable by SU): \$5,121	Subtotal (billable by SU): \$10,154
International Airfare TBA	International Airfare TBA
Housing TBA	Housing TBA
Board TBA	Board TBA
Passport Fees \$175	Passport Fees \$175
Visa Fees TBA	Visa Fees TBA
Personal Expenses \$1,000	Personal Expenses \$1,000
Subtotal (Other): TBA	Subtotal (Other): TBA
Total Est. Cost: TBA	Total Est. Cost: TBA

See this program's budget online for up-to-date estimates



HOST INSTITUTION

The American Institute of Indian Studies (AIIS) was formed to further the knowledge of India in the United States by supporting American scholarship on India. The programs of AIIS promote and advance mutual understanding between the citizens of the U.S. and of India. AIIS has offices and research centers in the United States and India, research centers at its campus in Gurugram, and a centrally located office in Delhi. More than 6,000 scholars and creative artists have received AIIS support, with their work spanning the humanities, social sciences, social policy and natural sciences. The Institute has been directly responsible for fostering several generations of new scholars, and its senior fellows have returned to classrooms where they have taught tens of thousands of American college students.

HOUSING

At each of the AIIS locations throughout India, students live with local host families. In many cases, the immersion experience with the families is a critical component to the language acquisition process. In all cases, the families are carefully selected by AIIS.

STUDENT VISA

Student visas are granted to people who wish to go to India and study at an officially recognized educational institution. The main document required is student admission/registration papers from the host institution. Students are required to fill out an online visa application by going to the and then visiting their nearest Indian embassy with a printout of the online filled application and required travel documents.

India

SAMPLE OF AVAILABLE COURSES

Students can study one of the following Indian languages at different sites throughout India with AIIS: Hindi, Urdu, Bengal, Tamil, Telugu, Sanskrit, Punjabi, Kannada, Marathi, Malayalam, Tibetan, Pali. Students are registered in the following courses:

- MDFL 101 Elementary Language Study I (4 credits)
- MDFL 102 Elementary Language Study II (4 credits)
- MDFL 399 International Field Study (4 credits)
- IDIS 399 Interdisciplinary Studies Global Seminar (4 credits)





Salisbury Abroad Exchange: Aoyama Gakuin University

HIGHLIGHTS

- Study in the fall or spring semester at one of Japan’s leading international universities, with two buildings registered as National Cultural Properties
- Immerse yourself in Japanese culture and improve your Japanese language proficiency
- Live in a brand new residence hall with international students from around the world

Aoyama Gakuin University (AGU) was initially founded in 1874 and has two campuses. The original Aoyama main campus, in Tokyo’s Shibuya ward, was established in 1888, and the Sagami-hara modern campus was established in 2003. In 2015, the School of International Politics, Economics and Communication (SIPEC) launched the Global Studies Program (GSP) in order to return the school to its roots as a pioneer in international education.

CLASSES

Exchange students (undergraduate) are required to take at least 14 credits per semester at AGU (at least 10 hours of class time per week) to maintain student visa status. The majority of the courses are two credits per semester. Each period is 90 minutes long and one semester consists of 15 weeks of classes.

SU students can spend a semester or year studying at AGU and will only pay their usual SU tuition and fees; they pay no tuition at AGU. The number of exchange slots for SU students is limited. SU students not selected for one of the competitive exchange slots, regardless of major, are able to spend a semester or year at AGU as fee-paying study abroad students. SU

students may select modules in a wide variety of disciplines. Availability of classes is dependent upon the course schedule of each semester.

GRADES AND CREDITS

Full-time equivalent requirement:

All students are responsible to make sure they are taking the number of courses/ modules that are equivalent to 12 SU credits (or more) during their study abroad semester (fall or spring) at the host institution.

Transfer Credits: Students on this program earn transfer credits. Students must earn the equivalent of C or better in the host institution’s program. No SU GPA is calculated.

HOST INSTITUTION

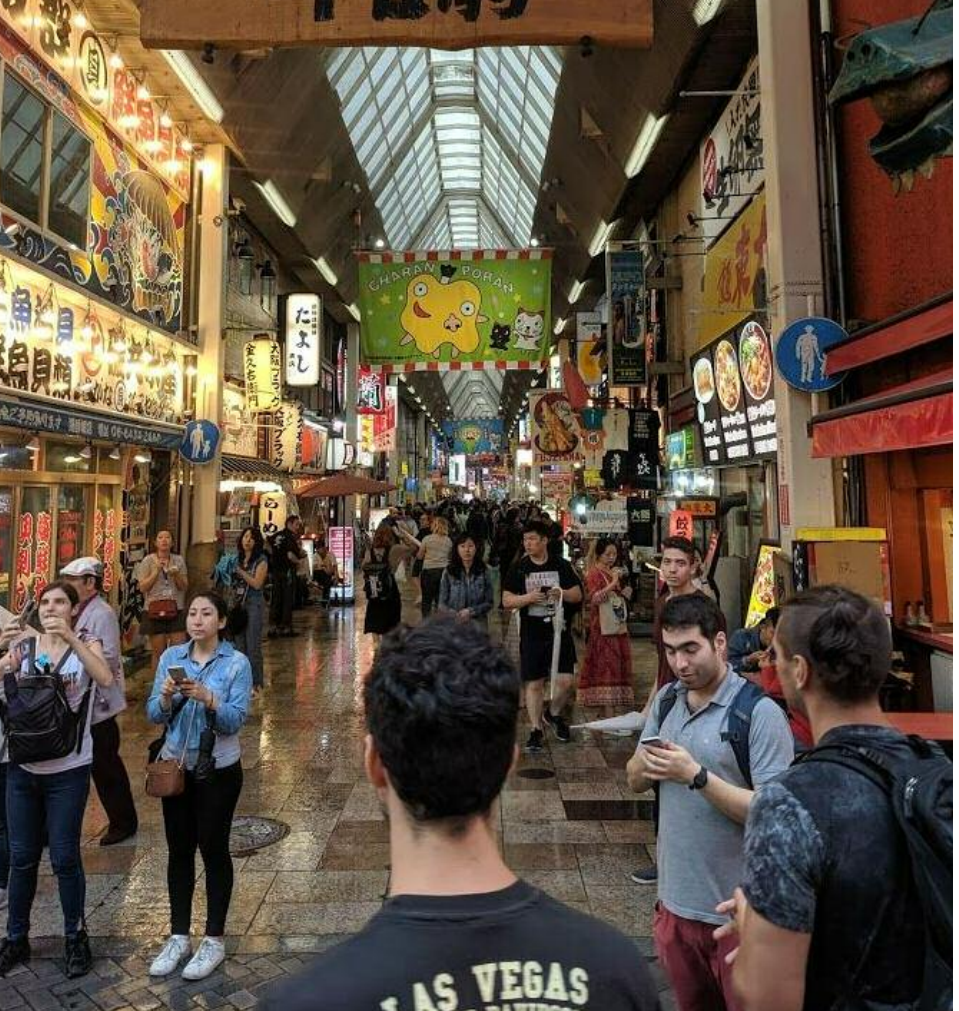
Aoyama Gakuin University was established as a private university in 1949. There are two campuses: Aoyama Campus in Shibuya, Tokyo, and Sagami-hara Campus in Fuchinobe, Kanagawa. It takes approximately 90 minutes to commute by train between campuses. Exchange students can choose which campus to study according to the area of study applicable. It has seven Departments: Literature; Education, Psychology and Human Studies; Economics; Law; Business; International



City: Tokyo
Population: 37,435,191
Language of Instruction: English, Japanese
Currency: Yen
Host Institution: Aoyama Gakuin University

ESTIMATED BUDGET

MARYLAND RESIDENT	NON-MARYLAND RESIDENT
Tuition \$5,022	Tuition \$10,055
Mandatory Health Insurance \$99	Mandatory Health Insurance \$99
Subtotal (billable by SU): \$5,121	Subtotal (billable by SU): \$10,154
International Airfare \$1,600	International Airfare \$1,600
Accommodations & Board \$5,800	Accommodations & Board \$5,800
Books & Materials \$275	Books & Materials \$275
Passport Fees \$175	Passport Fees \$175
Insurance \$50	Insurance \$50
Personal Expenses \$1,000	Personal Expenses \$1,000
Subtotal (Other): \$8,900	Subtotal (Other): \$8,900
Total Est. Cost: \$14,021	Total Est. Cost: \$19,054



Politics, Economics and Communication; Cultural and Creative Studies.

HOUSING

AGU I-House (Musashi-Kosugi) was established in April 2017 as a co-ed, off-campus dormitory operated by AGU, in cooperation with Itochu Urban Community Co., Ltd. The university manages two floors of a seven-story building as AGU I-House, with 128 single rooms. Half of these rooms are occupied by international students. AGU I-House includes Multi-Purpose Room, Fitness Gym, Laundry Room, Lounge, cafeteria, terrace, and garden. Five resident assistants (RA) will be assigned to assist the residents with day-to-day matters and to

facilitate the communication between international students and Japanese students by organizing social events and floor meetings.

STUDENT VISA

Student visas are granted to people who wish to go to Japan and study at an officially recognized educational institution. The main document required is student admission/ registration papers from the host institution. Students are required to fill out an online visa application by going to the Student Visa Online Application site, and then visiting their nearest Japanese embassy with a printout of the online filled application and required travel documents.

Japan

SAMPLE OF AVAILABLE COURSES

Global Studies:

- Agriculture in Asia
- History of Japanese Journalism
- Traditional Art and Culture in Modern Japan
- Introduction of Japanese Culture
- International Peace and Cooperation

Business:

- Global Communication I
- Global Communication II
- Entrepreneurial Management

English:

- Introduction to English Literature I
- Introduction to Global Literature

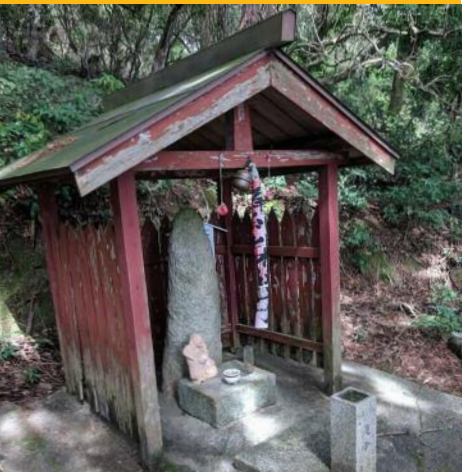
Economics:

- Microeconomics I
- Microeconomics II
- Global Business

International Politics:

- Introduction to International Politics
- Culture and Society

(Pending approval from the student's major and/or minor chair(s))





Salisbury Abroad Exchange and Teaching Internship: University of Waikato

HIGHLIGHTS

- Study in the fall or spring semester in one of the safest, most politically stable and culturally diverse countries in the world
- Experience the world-famous scenic wonderland of New Zealand
- Small classes and affordable, quality education
- Do your teaching internship or study as an international exchange student

HOST INSTITUTION

Times Higher Education ranks the University of Waikato 68th out of 100 “most international” universities in the world. With a student enrollment of just over 12,000 students, the university offers academic programs on its main campus in the city of Hamilton, as well as in the beautiful seaside community of Tauranga. Salisbury students from any major are welcome to study for a full semester at University of Waikato.

ACADEMIC EXCHANGE STUDENTS

International exchange students (undergraduate) are required to take at least 12 credits per semester (fall or spring) at the University of Waikato (UW). Students may spend either the fall or spring semester at University of Waikato (UW). SU fee-based study abroad students may select modules in a wide variety of disciplines. Availability of classes is dependent upon the course schedule of each semester. All students must work with the Study Abroad Office at Salisbury University and their academic advisors to approve courses for transfer.

TEACHER EDUCATION

INTERNSHIP PLACEMENT

Elementary education and early childhood education students have the opportunity to complete a portion of their teaching internship in the Tauranga District of New Zealand Public Schools through a collaboration with the University of Waikato. World famous for its education system, and particularly its literacy and mathematics education programs, New Zealand is a truly special place for interns to complete one of their required professional internship experiences. The SU Department of Teacher Education in the Seidel School of Education has been sending student teachers to New Zealand public schools for nearly 20 years, making it one of SU’s oldest international initiatives. The New Zealand teaching internship program is competitive and enrollment is limited.

The Faculty of Education is one of the best in New Zealand higher education, with academic programs at the undergraduate, graduate and post-graduate levels. Led by its dean, Professor Roger Moltzen, Waikato was the first teachers’ training college to merge with a university. The Waikato Faculty of Education was the first to offer early childhood qualifications and teacher education online programs. According to

Professor Moltzen: “the Faculty of Education is determined to be part of these educational developments through the three interconnected disciplines of teaching, research and professional learning.”

Interns are placed in a school internship at the early childhood or elementary level. The internship meets all requirements of Maryland certification and adheres to the specifications set forth by the Teacher Education Program at Salisbury University. The Waikato Faculty of Education works in conjunction with SU’s Teacher Education Program to insure that a placement is designed to fit the participant’s individual and home institutional goals, needs and requirements. Interns are placed at local partnership schools in the beautiful seaside community of Tauranga. With a focus on teaching and learning, interns are assessed on their ability to practice and perform their teaching capability progressively. Mentor (associate) teachers and supervisors contribute to the mission of developing quality educators by conducting evaluations, debriefing lesson observations and providing constructive feedback to candidates. In addition, mentors teachers and supervisors complete all required



City: Tauranga, New Zealand
Population: 130,800
Language of Instruction: English
Currency: New Zealand Dollar
Host Institution: University of Waikato

ESTIMATED BUDGET

MARYLAND RESIDENT	NON-MARYLAND RESIDENT
Tuition \$5,022	Tuition \$5,022
Mandatory Health Insurance \$99	Mandatory Health Insurance \$99
Subtotal (billable by SU): \$5,121	Subtotal (billable by SU): \$10,154
International Airfare \$2,100	International Airfare \$2,100
Housing TBA	Housing TBA
Board TBA	Board TBA
Passport Fees \$175	Passport Fees \$175
Personal Expenses \$1,500	Personal Expenses \$1,500
Subtotal (Other): TBA	Subtotal (Other): TBA
Total Est. Cost: TBA	Total Est. Cost: TBA

See this program’s budget online for up-to-date estimates



Salisbury University education assessments online and forward all paperwork to the Teacher Education Program.

GRADES AND CREDITS

Full-time equivalent requirement:

All students are responsible to make sure they are taking the number of courses/modules that are equivalent to 12 SU credits (or more) during their study abroad semester (fall or spring) at the host institution.

Transfer Credits: Students on this program earn transfer credits. Students must earn the equivalent of C or better in the host institution’s program. No SU GPA is calculated.

HOUSING

Education interns live with carefully selected host families in Tauranga and the surrounding areas. The University of Waikato works diligently to match interns’

living preferences with homestay hosts and their families who represent modern New Zealand society. The homestay experience is an integral part of the overall program and provides interns with the opportunity to take part in the daily life of a New Zealand family. Living with host families in New Zealand has been central to the continued success of the New Zealand program and has provided students with opportunities to build relationships that last long after the internship experience is long over.

COSTS

Both international exchange students and education interns pay their regular SU tuition and fees (resident or non-resident tuition applies). For the teacher education intern, this tuition includes the credits earned for the internship in New Zealand, the online seminar taken concurrently at SU and the remainder of the semester

SAMPLE OF AVAILABLE COURSES

Biological Sciences:

- Animal Structure and Function
- Molecular Ecology and Biodiversity
- Marine Ecology
- Aquaculture

Economics:

- Business Economics and the New Zealand Economy
- Economics and Society
- Understanding the Global Economy
- Data Analytics with Business Applications

English:

- Global Fictions
- Shakespeare’s Worlds
- Writing for the Screen

Geography:

- Introduction to Resource Management
- Health, People, Place

History:

- History in Practice: Historical Methods and Research
- Researching Iwi Maori History

International Relations and Security Studies:

- Terrorism, Violence and the State
- International Politics of Asia

(Pending approval from the student’s major and/or minor chair(s))

credits for the second internship and seminar completed in Maryland. Additional international internship fees cover University of Waikato administrative fees, mentor and supervisor fees, and homestay fees (including meals). Costs do not cover Maryland mentor fee, personal liability Insurance, airfare or daily incidental costs.



Salisbury Abroad Exchange: University of Stirling

HIGHLIGHTS

- Take classes in the fall, spring or summer semester in a wide variety of fields at the world-class University of Stirling
- Live in apartments with other international students gaining insights into both Scottish culture and life in other parts of the globe
- Competitive exchange spot allows you to study and live in the United Kingdom for a fraction of the typical costs

Salisbury University and the University of Stirling (US), Scotland, engage in the exchange of students and faculty. SU students can spend a semester or year studying a variety of disciplines at Stirling. The program is a bi-lateral international student exchange. So, outgoing SU students continue to pay their tuition and fees at SU as always, and are charged no tuition at US. The number of exchange slots for SU students is limited to two per semester and selection for the spaces is competitive. SU students not selected for one of the competitive exchange slots are still able to spend a semester or year at US in Scotland as fee-paying study abroad students.

COURSE MODULES

Each semester, SU students choose three different academic modules (courses). It is recommended that students have up to six modules approved by SU prior to departure. That will allow the student the maximum flexibility upon arrival in Scotland. Each module is generally equivalent to 5-6 SU credits for a total of 15-18 credits per semester. Modules are available in a wide variety of disciplines from science and technology to business

studies to education to media and history. SU students can earn four of five courses for the interdisciplinary minor in European studies during one semester. For more information on the European studies minor, see the Area Studies Minors Program website.

GRADES AND CREDITS

Full-time equivalent requirement:

All students are responsible to make sure they are taking the number of courses/modules that are equivalent to 12 SU credits (or more) during their study abroad semester (fall or spring) at the host institution.

Transfer Credits: Students on this program earn transfer credits. Students must earn the equivalent of C or better in the host institution's program. No SU GPA is calculated.

HOST INSTITUTION

The University of Stirling was named Scottish University of the year for 2009-10. The University of Stirling is ranked as one of the world's top 350 universities in the Times Higher Education World University Rankings (2014-2015) and first for a "Good Place To Be" (International Student



ESTIMATED BUDGET

MARYLAND RESIDENT*	NON-MARYLAND RESIDENT
Tuition and Fees \$5,022	Tuition and Fees \$10,055
ISIC Premium Health Insurance \$99	ISIC Premium Health Insurance \$99
Subtotal (billable by SU): \$5,121	Subtotal (billable by SU): \$10,154
Housing \$3,200	Housing \$3,200
Board \$1,000	Board \$1,000
Personal Expenses \$2,000	Personal Expenses \$2,000
International Airfare \$1,200	International Airfare \$1,200
Passport Fees \$175	Passport Fees \$175
Visa \$0	Visa \$0
Subtotal (Other): \$7,575	Subtotal (Other): \$7,575
Total Est. Cost: \$12,696	Total Est. Cost: \$17,729

In-state students of all other programs and students not selected for the exchange pay approximately the out-of-state tuition amount.

City: Stirling, Scotland
Population: 45,750
Language of Instruction: English
Currency: British Pound
Host Institution: University of Stirling

Barometer, 2012). It is a comprehensive university similar in size to SU with just over 8,000 undergraduates and 3,000 graduate students. Nestled in the heart of Scotland, where the highlands and the lowlands meet, Stirling is ideally located approximately 30 miles from Glasgow and Edinburgh. The city of Stirling is a historic college town with a population of around 40,000, also very comparable to Salisbury. The campus is a combination of old world charm – with the historic 18th century Airthrey Castle located at its very heart – and modern conveniences including a nine-hole golf course, a small shopping mall, bars and a nightclub all located right on campus.

HOUSING

All study abroad students at University of Stirling are guaranteed University-owned or managed accommodations located on or just off campus. Normally that accommodation is a room in an apartment shared with local Scottish students and/or other study abroad students.

PROGRAM TRAVEL

The Salisbury Abroad: Stirling semester study abroad program does not offer any customized travel excursions as part of the program. However, Stirling is an excellent location to launch independent travel throughout the United Kingdom and all of Europe. Low-cost airlines and train travel offer connections from Glasgow and Edinburgh to the U.K. and the rest of Europe.



SAMPLE OF AVAILABLE COURSES

Biology

- Evolution and Genetics
- Molecular Techniques-2
- Introduction to Aquatic Environments

Communications

- Digital Media and Culture

Computer Science

- Artificial Intelligence
- Computer Security and Forensics
- Computer Games Development
- Software Engineering I and II

English

- Global Cinema
- Language and Society
- Renaissance Literature
- Writing and Theory

Environment Studies

- Agriculture and Food Security in the 21st Century

Exercise and Sports Science

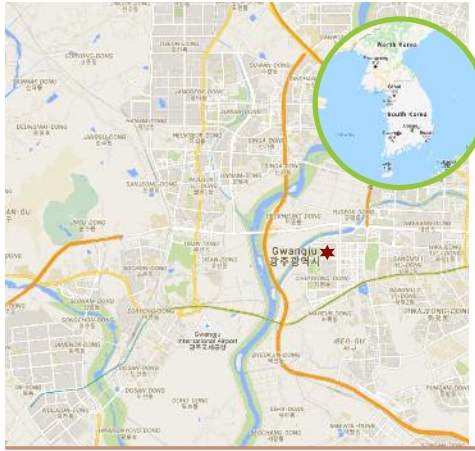
- Applied Exercise Physiology
- Physical Education School Sport and Youth Culture
- Sport Governance

History

- The Making of Modern Britain: 1707-2000 – An Introduction

Political Science

- Political Concepts and Ideas



Salisbury Abroad Exchange: Chonnam National University

HIGHLIGHTS

- Study in the fall, spring or summer session at one of the Republic of Korea's leading national universities with a world-class reputation
- Take courses taught in English that are integrated into many majors throughout SU
- Immerse yourself in Korean culture and improve your Korean language proficiency
- Live in a residence hall right on campus

Salisbury University students have the opportunity to spend the semester or year at Chonnam National University in Gwangju, South Korea.

ELIGIBILITY

Admission is competitive and enrollment is limited.

CLASSES

All students take one course in Korean language either at the beginning level for students with no previous Korean language experience or at a higher level based on their courses completed or placement exam. In addition, students can take three or four additional classes in English in a variety of disciplines. The School of Business at Chonnam National University is accredited by AACSB, making credits easier to integrate into majors in the Perdue School of Business. Students should consult with their major department advisor about the integration of the courses offered into the minor or major. The Center for International Education will assist students to integrate courses into the general education curriculum.

SU students can earn four of five courses for the interdisciplinary minor in East

Asian studies during one semester on the Salisbury Abroad: Korea program. For more information on the East Asian studies minor, see the Area Studies Minors program website.

CNU INTERNATIONAL SUMMER SESSION

Take **ONLY ONE** of a number of courses, taught in English, that are integrated into many majors throughout SU

GRADES AND CREDITS

Full-time equivalent requirement:

All students are responsible to make sure they are taking the number of courses/modules that are equivalent to 12 SU credits (or more) during their study abroad semester (fall or spring) at the host institution.

Transfer Credits: Students on this program earn transfer credits. Students must earn the equivalent of C or better in the host institution's program. No SU GPA is calculated.

HOUSING

Exchange students at Chonnam National University stay in a residence hall located right on the main campus. The residence hall is a suite apartment style with three



ESTIMATED BUDGET

MARYLAND RESIDENT

Tuition and Fees
\$5,022

ISIC Premium
Health Insurance
\$99

**Subtotal
(billable by SU):
\$5,121**

Housing & Board
\$2,300

Personal Expenses
\$1,000

International Airfare
\$1,300

Mandatory Korean
Health Insurance
\$90

Passport Fees
\$175

Visa Fees
\$50

**Subtotal (Other):
\$4,915**

**Total Est. Cost:
\$10,036**

NON-MARYLAND RESIDENT

Tuition and Fees
\$10,055

ISIC Premium
Health Insurance
\$99

**Subtotal
(billable by SU):
\$10,154**

Housing & Board
\$2,300

Personal Expenses
\$1,000

International Airfare
\$1,300

Mandatory Korean
Health Insurance
\$90

Passport Fees
\$175

Visa Fees
\$50

**Subtotal (Other):
\$4,915**

**Total Est. Cost:
\$15,069**

City: Gwangju, Republic of Korea
Population: 1,477,780
Language of Instruction: English, Korean
Currency: Korean Won
Host Institution: Chonnam National University



bedrooms. Two people share each bedroom and six people live in each suite. There are twin beds in each room and a shared bathroom and shower in each apartment. Wired Internet access is available. Students need to purchase a LAN cable to get access to the internet.

Exchange students pay the housing cost directly to Chonnam National University after they arrive. Students need to be able to access the equivalent to an estimated U.S. \$700 in Korean Won within the first week in GwanGju. Having access to this money so soon after arrival requires some planning in advance.

HOST INSTITUTION

Chonnam National University is one of 10 key national universities in the Republic of Korea. It was founded in the early 1950s as South Korea emerged from the Korean War by joining together a number of local universities. Today, it is home to approximately 35,000 students, including over 1,000 international students. The university is located in the metropolitan

center of Gwangju near the southern end of the Republic of Korea.

CITY OF GWANGJU

The city was established in 57 BC and has been a major political and economic center of Korea ever since. Gwang means "light" and Ju means "province." Areas of exquisite scenery along the outskirts of the city gave birth to gasa, a form of Korean classical poetry. Located in the center of the agricultural Jeolla region, the city is also famous for its rich and diverse cuisine. It is also well known as a holy and the most democratic city in South Korea.

KOREAN GOVERNMENT SCHOLARSHIP PROGRAM

The objective of the Korean Government Scholarship Program (KGSP) is to provide higher education in Korea for international students in order to promote international exchange in education and mutual friendship between participating countries. For further information please contact CNU.

SAMPLE OF AVAILABLE COURSES

Business (English)

- Consumer Behavior
- Introduction to International Trade
- Service Marketing
- Investment Theory
- Management Innovation

International Relations (English)

- History of International Relations
- International Human Rights
- Comparative Administration
- Introduction to Korean History
- Sociology of Migration
- Introduction to Korean Traditional Art

Korean Language

- Elementary Korean
- Intermediate Korean

Pending approval from the respective academic department.





Salisbury Abroad Exchange: University of Malaga

HIGHLIGHTS

- Improve your Spanish dramatically in a setting where you are able to use it on a daily basis
- Live with a host family or in an apartment with other international students
- Experience life in the beautiful city of Malaga – a true Spanish city not overrunning with tourist and next to the Mediterranean Sea
- Study in Spain in the fall, spring or summer semester for about the same cost of studying at Salisbury

Salisbury University and the Universidad de Malaga (UMA) regularly engage in the exchange of students and faculty. While Spanish students from UMA study a variety of disciplines at SU, SU students study Intensive Spanish at the UMA Cursos para Estudiantes Extranjeros Center, or at any one of a variety of disciplines in one of 11 academic schools throughout the UMA system. The program is a bi-lateral international student exchange. So, outgoing SU students continue to pay their tuition and fees at SU, as always, and are charged no tuition at UMA.

ELIGIBILITY

- Admission is competitive and enrollment is limited.
- Students will be admitted on a rolling basis until the program is full. Once the program is full, accepted students will be placed on a waiting list.

HOST INSTITUTION

UMA is one of the key drivers for development in the autonomous region of Andalucía. The university runs a wide selection of courses in Spanish for foreigners through its center, Centro de Estudiantes Extranjeros (CEEUMA). CEEUMA is an intimate learning community located just

outside the city center in the suburb of El Palo and blocks from the Mediterranean beaches. At the main Teatinos campus and other sites around Downtown Malaga, UMA provides a wide variety of academic programs at the undergraduate and graduate levels to over 40,000 undergraduate and graduate students in 11 different schools. All of the UMA sites are easily connected by clean, safe and affordable natural-gas-powered public transportation.

CITY OF MALAGA

Malaga is a beautiful and historic beach-lined city of 600,000. It was founded by the Phoenicians in approximately 1000 BC. Through centuries of empire and conquest, Malaga has continued to play a role as a critical Mediterranean port city. In addition to its Phoenician roots, Malaga bears the influence of the Roman Empire and the Muslim heritage of the medieval Umayyad caliphate of Al-Andalus. Nestled on the Mediterranean Sea, Malaga serves as a gateway to the beautiful resort beaches of the country's famous Costa del Sol.

CLASSES

Students can take 16 credits of full-time intensive Spanish language and literature. Courses start at the introductory level and go



ESTIMATED BUDGET	
MARYLAND RESIDENT	NON-MARYLAND RESIDENT
Tuition and Fees \$5,022	Tuition and Fees \$10,055
Room & Board \$3,700	Room & Board \$3,700
ISIC Premium Health Insurance \$99	ISIC Premium Health Insurance \$99
Subtotal (billable by SU): \$8,821	Subtotal (billable by SU): \$13,854
Personal Expenses \$2,000	Personal Expenses \$2,000
Estimated Airfare \$1,200	Estimated Airfare \$1,200
Passport Fees \$175	Passport Fees \$175
Visa Fees \$150	Visa Fees \$150
Subtotal (Other): \$3,525	Subtotal (Other): \$3,525
Total Est. Cost: \$12,346	Total Est. Cost: \$17,379

City: Malaga, Spain
Population: 569,000
Language of Instruction: Spanish, English
Currency: Euro
Host Institution: Universidad de Malaga



all the way to advanced language and Spanish culture. Courses can transfer back to the major or minor in Spanish at Salisbury University.

Alternatively, students can take a combination of courses in Spanish language and Spanish history, culture and European studies taught in English. All students must take at least eight credits of Spanish language. However, the rest of the courses could be in English and can transfer back toward either General Education credits or towards minors or majors in a number of programs including the minor in European studies, art, history, and international studies..

Students should work with the faculty director and their academic advisor to determine which courses would be appropriate for their degree requirements.

GRADES AND CREDITS

Full-time equivalent requirement:
All students are responsible to make sure

they are taking the number of courses/modules equivalent to 12 SU credits (or more) during their study abroad semester (fall or spring) at the host university.

Transfer Credits: Students must earn the equivalent of C or better in the host institution's program. No SU GPA is calculated.

HOUSING

Students may choose to live and take meals in selected Spanish homes, most of which are situated within a 10-minute walk of the Mediterranean, or they may choose to live in apartments shared with other international students with no board included. The estimated budget provided assumes housing and full board with a Spanish family.

PROGRAM TRAVEL

The Salisbury Abroad: Spain program includes no programmed excursions. Easy and affordable public transportation (buses and trains) connect Malaga to the rest of the Andalucía region, including popular cultural sites like Granada's Alhambra, Córdoba's Mezquita, Sevilla's Cathedral and Reales Alcázares, and Ronda's Plaza de toros. Malaga's international airport provides direct low-cost airfare to popular destinations throughout Europe, making Malaga a strategic launching place for explorations of all of Europe.

COSTS

Students on the University of Málaga program pay regular full-time tuition and fees to Salisbury University and study tuition free at the University of Málaga. Non-resident tuition costs at SU apply to the Salisbury Abroad: Spain program. The combination of tuition, room and board in

Spain

Spain is roughly equivalent to tuition and on-campus housing with full board on main campus in Salisbury, MD.

STUDENT VISA

Student visas are granted to people who wish to go to Spain and study at an officially recognized educational institution. The main document required is student admission/registration papers from the host institution. Students are required to fill out an online visa application by going to the Student Visa Online Application site, and then visiting their nearest Spanish embassy with a printout of the online filled application and required travel documents.

SAMPLE OF AVAILABLE COURSES

Spanish Language (in Spanish)

- Spanish 102 — Introductory Spanish II
- Spanish 201 — Intermediate Spanish
- Spanish 202 — Spanish in Review
- Spanish 300 — Topics in Spanish (up to 8 credits)
- Spanish 310 — Oral and Written Composition
- Spanish 312 — Conversation
- Spanish 315 — Spanish Civilization
- Spanish 400 — Advanced Stylistics

Spain and European Union Studies (in English)

- International Relations: Spain as a Gateway to Europe, Africa and Latin America
- The European Union and Current challenges
- Christian, Jews and Muslims in Spain
- Cross-Cultural Psychology
- From El Greco to Picasso: The Great Masters of Spanish Painting
- Spanish Art and Architecture
- Gender Issues in North America and the Hispanic World: Cross Cultural Perspectives

Salisbury Abroad Direct Enroll: School for Field Studies

School for Field Studies

HIGHLIGHTS

- Earn 16 credits in biology and environmental sciences while taking classes abroad and doing field research in the fall or spring semester
- School for Field Studies (SFS) is the leader in global environmental field studies for U.S. undergraduates
- Live at a research station with other students and researchers, implementing environmental research that meets community-defined goals

Salisbury University students have the unique opportunity to spend the semester exploring the environment of their choice by means of “field-based learning and research,” which focuses on problem-solving of real-world issues critical to local communities, facilitates interaction with community members and agencies to implement research goals that meet community-defined goals, uses interdisciplinary models to best address the complexity of environmental problems, promotes collaborative team efforts, and employs experiential learning, applying classroom concepts directly in the field.

Take part in environmental field studies abroad in one of the School for Field Studies’ eight semester programs where each site offers a curriculum specific to its ecosystem:

- **Australia:** Tropical Rainforest Studies: www.fieldstudies.org/australia/semester
- **Bhutan:** Himalayan Environment and Society in Transition (FALL ONLY, not spring): www.fieldstudies.org/bhutan/semester
- **Cambodia:** Mekong Studies: www.fieldstudies.org/mekong/semester
- **Costa Rica:** Sustainable Development Studies: www.fieldstudies.org/costarica/semester
- **Panama:** Tropical Island Biodiversity Studies: www.fieldstudies.org/panama/semester
- **Peru:** Andes-Amazon Studies: www.fieldstudies.org/peru/semester
- **Tanzania:** Wildlife Management Studies: www.fieldstudies.org/eastafrica/semester
- **Turks and Caicos Islands:** Marine Resource Studies: www.fieldstudies.org/tci/semester

HOST INSTITUTION

Since 1980, SFS has offered programs that are based in locations and ecosystems grappling with critical environmental issues such as climate change. Our programs are intense, invigorating and fulfilling, and they are delivered by an all-star team of faculty and staff. Students on our programs examine firsthand the environmental issues faced by our host communities, gaining important research skills, making lifelong friends and contributing to a growing body of international environmental research.



ESTIMATED BUDGET	
MARYLAND RESIDENT	NON-MARYLAND RESIDENT
Tuition and Fees*	Tuition and Fees*
\$5,022	\$10,055
Housing	Housing
\$3,275	\$3,275
Board	Board
\$2,400	\$2,400
Mandatory Health Insurance	Mandatory Health Insurance
\$99	\$99
Field Studies Fees*	Field Studies Fees*
\$12,598	\$8,392
Subtotal (billable by SU):	Subtotal (billable by SU):
\$23,394	\$24,221
Personal Expenses	Personal Expenses
\$1,500	\$1,500
International Airfare	International Airfare
\$1,500	\$1,500
Passport Fees	Passport Fees
\$175	\$175
Visa Fees	Visa Fees
\$100	\$100
Subtotal (Other):	Subtotal (Other):
\$3,275	\$3,275
Total Est. Cost:	Total Est. Cost:
\$26,699	\$27,496

CLASSES

Every semester, each of the School for Field Studies’ programs offers 16 credit hours in environmental studies and students can get Salisbury University credits in environmental studies and biology. An additional two-credit language and culture course is offered in Bhutan, Costa Rica, Cambodia, Panama, Peru and Tanzania.

GRADES AND CREDITS

Credit Type: Resident Credits: This program has a curriculum that has been integrated into the Salisbury University curriculum. The Study Abroad Office will register you in the Salisbury University courses that you select in your pre-departure registration process. You will take your classes at your host institution and your grades will be posted as Salisbury University grades with Salisbury University grade point average in GullNet. Transcripts and/or grade reports from semesters abroad typically arrive two to three months after the end of the semester abroad. Your Salisbury University grades cannot be posted in GullNet until after your transcripts and/or grade reports arrive.

HOUSING

Housing varies from site to site: from shared eight person cabins in Australia, dormitories in Bhutan, Cambodia and Costa Rica to “rustic” living conditions at the field station in Tanzania. Students need to be aware that they will participate in communal living.

SFS FINANCIAL AID

Tuition and fees at the School for Field Studies are much higher than at Salisbury University. SFS is committed to making its programs available for everyone. They have a full financial aid program that offers scholarships and low-interest loans to attempt to close the gap between the home tuition at its partner universities and the SFS total cost. SFS awards over \$450,000 in financial aid each year, and each applicant is automatically considered for more than 12 scholarships, grants and loans when they submit an SFS Financial Aid Application. About 90% of students who apply for SFS aid receive it. Many SU students have received sizable financial aid packages directly from SFS, which have greatly reduced the difference in cost between a semester at SU and a semester abroad with SFS.

SAMPLE OF AVAILABLE COURSES

Students earn 15-16 credits integrated into the biology and/or environmental studies majors and minors at SU depending on program location and course selection:

- BIOL 398: International Topics in Ecology
- BIOL 417: International Research in Biology
- ENVR 349: International Study of Policy, Values and Environment
- ENVR 399: International Study of Resource Management and Sustainability





Salisbury Abroad Exchange and Teaching Internship: Linköping University

HIGHLIGHTS

- Study in the fall or spring semester at one of Sweden’s leading international universities in the city of Linköping
- Do your teaching internship or study as an international exchange student

Elementary education and early childhood education students have the opportunity to complete a portion of their teaching internship in Sweden’s renowned public school system through a collaboration with Linköping University (LiU), known for its strategic initiatives in education.

The Sweden Teaching Internship Program is competitive and enrollment is limited.

HOST INSTITUTION

Linköping University is a state university that was granted university status in 1975 and today has 20,000 students and 4,000 employees. It has several campuses, connected by a campus bus. International rankings consistently place LiU as a leading global university. LiU is known for student-centered learning with a high student satisfaction rate and an interdisciplinary approach to studies.

ACADEMIC EXCHANGE STUDENTS

Salisbury students from any major are welcome to study 15-16 credits for a full semester at Linköping University. Students from outside of the European Union must take courses of at least 30 ECTS per semester.

Students may spend either the fall or

spring semester at LiU. SU fee-based study abroad students may select modules in a wide variety of disciplines, including music, economics/business, journalism, screen media, English, psychology, history, political science, social anthropology, drama, sociology and sport sciences, etc. Availability of classes is dependent upon the course schedule of each semester.

INTERNSHIP PLACEMENT

World famous for its education system, Sweden is a truly special place for interns to complete one of their required professional internship experiences. The SU Teacher Education Program in the Seidel School of Education has been sending student teachers abroad to intern in public schools for nearly 20 years, making it one of SU’s oldest international initiatives.

Interns are placed in an eight-week school internship at the appropriate school level. The internship meets all requirements of Maryland certification and adheres to the specifications set forth by the Teacher Education Program at Salisbury University. The Linköping Faculty of Educational Sciences works in conjunction with SU’s Teacher Education Program to insure that a placement is designed to fit



ESTIMATED BUDGET	
MARYLAND RESIDENT	NON-MARYLAND RESIDENT
Tuition \$5,022	Tuition \$10,055
Mandatory Health Insurance \$99	Mandatory Health Insurance \$99
Subtotal (billable by SU): \$5,121	Subtotal (billable by SU): \$10,154
International Airfare \$1,000	International Airfare \$1,000
Housing TBA	Housing TBA
Board TBA	Board TBA
Passport \$175	Passport \$175
Student Visa TBA	Student Visa TBA
Personal Expenses \$1,500	Personal Expenses \$1,500
Subtotal (Other): TBA	Subtotal (Other): TBA
Total Est. Cost: TBA	Total Est. Cost: TBA

See this program's budget online for up-to-date estimates

City: Linköping
Population: 158,841
Language of Instruction: English
Currency: Crona
Host Institution: Linköping University



the participant’s individual and home institutional goals, needs and requirements. With a focus on teaching and learning, interns are assessed on their ability to practice and perform their teaching capability progressively. Mentor (associate) teachers and supervisors contribute to the mission of developing quality educators by conducting evaluations, debriefing lesson observations and providing constructive feedback to candidates. In addition, mentors teachers and supervisors complete all required Salisbury University education assessments online and forward all paperwork to the Teacher Education Program.

GRADES AND CREDITS

Full-time equivalent requirement:

All students are responsible to make sure they are taking the number of courses/modules that are equivalent

Transfer Credits: Students on this program earn transfer credits. Students must earn the equivalent of C or better in the host institution’s program. No SU GPA is calculated.

HOUSING

While in Sweden, interns live with carefully selected host families in the surrounding areas. Linköping University works diligently to match interns’ living preferences with homestay hosts and their families who represent modern Swedish society. The homestay experience is an integral part of the overall program and provides interns with the opportunity to take part in the daily life of a Swedish family. Living with host families in Sweden provides students with opportunities to build relationships that last long after the internship experience is long over.

CITY OF LINKÖPING

Linköping (located on the Östergötland Plain, 125 miles from Stockholm, in the country’s geographic center) is Sweden’s fifth largest city, with roughly 158,000 inhabitants. It is best known for its university and high-tech industry.

COSTS

In all cases, students pay their regular SU tuition and fees (resident or non-resident tuition applies). This tuition includes the credits earned for the internship in Sweden, the online seminar taken concurrently at SU, and the remainder of the semester credits for the second internship and seminar completed in Maryland. Additional international internship fees cover Linköping University administrative fees, mentor and supervisor fees, and homestay fees (including meals). Costs do not cover Maryland mentor fee, personal liability insurance, airfare or daily incidental costs.

Sweden

STUDENT VISA

If you are going to study at LiU for longer than three months, you will need a residence permit or a right of residence. You must apply for a residence permit at the Swedish embassy or consulate, or with the Swedish Migration Agency, in your home country. The permit or visa must be entered in your passport before your arrival in Sweden. Different rules apply to non-EU/EEA students who come within the framework of an exchange agreement.

SAMPLE OF AVAILABLE COURSES

Environmental Science:

- Environmental Monitoring
- Sustainable Development in the Global Context
- International Environmental Management

Economics:

- Development Economics
- Behavioral Economics
- Industrial Organization
- Intermediate Macroeconomics

English:

- Literature Foundation Course
- Cultural Studies Foundation Course
- English, Writers and Contexts

Culture and Media Production:

- Working With ‘The Real’: Documentary Film History, Theory and Practice

History:

- Sweden and the Swedes

Political Science:

- History of European Identity
- Europe’s Relation with the World
- The Swedish Model
- Europe in the World

(Pending approval from the student's major and/or minor chair(s))

Salisbury University Affiliate Partners

Want to study fashion in Italy? Arabic in Jordan? Industrial engineering in Brazil? Bio-diversity in South Africa? Salisbury University can get you there through one of our partner organizations. Through our “Affiliate Partners” you can study all around the globe and easily earn credits that transfer back to Salisbury all without skipping a beat in your studies.

AIFS (aifsabroad.com)

Argentina
Australia
Austria
Brazil
Chile
Costa Rica
Cuba
Czech Republic
Ecuador
England
France
Germany
Greece
Hungary
India
Ireland
Italy
New Zealand
Northern Ireland
Russia
South Africa
Spain



USAC (usac.unr.edu)

Australia
Brazil
Chile
China
Costa Rica
Cuba
Czech Republic
England
France
Germany
Ghana
India
Ireland
Israel
Italy
Japan
South Korea
Netherlands
New Zealand
Norway
Scotland
South Africa
Spain
Sweden
Thailand
Turkey
Uruguay

ISA (studiesabroad.com)

Argentina
Australia
Belgium
Brazil
Chile
China
Columbia
Costa Rica
Cuba
Czech Republic
Dominican Republic
England
Fiji
France
Germany
Greece
Ireland
Italy
Japan
Jordan
Morocco
New Zealand
Peru
Scotland
South Africa
South Korea
Spain
Thailand
The Netherlands
Vietnam

API (apistudyabroad.com)

Argentina
Australia
Bhutan
Chile
China
Costa Rica
Croatia
Cuba
Ecuador
France
Germany
Hungary
Iceland
Ireland
Italy
New Zealand
Poland
Portugal
Scotland
Spain
United Arab Emirates



Short-Term Study Abroad Programs and Global Seminars

For students who just cannot manage a full semester abroad on a Salisbury Abroad program, there are many opportunities for summer study abroad programs and short-term, faculty-led Global Seminars. Global Seminars and short-term, study abroad programs last anywhere from one to six weeks. Up-to-date information on these shorter international opportunities can be found online at: www.salisbury.edu/abroad

A partial list of opportunities for the 2019-20 academic year is below:

Winter Term Global Seminars

- **Argentina:** Literature and Politics
- **Belize:** International Studies in Global Public Health
- **Costa Rica:** Biodiversity Studies
- **Costa Rica:** Entrepreneurship, Technology and Business Strategy
- **Ecuador:** Global Health and Human Services
- **England:** Digital Photography in London and Paris
- **England:** History of Nursing
- **France:** Global Business Program
- **Ghana:** Global Health
- **India:** Bollywood and Beyond: Media, Culture and Communication
- **Italy:** International Studies in Theatre
- **Kenya:** Seminar in Kenyan Ecology and Sustainability
- **New Zealand:** Amori Culture
- **Portugal:** Drug Relations in Portugal
- **Scotland:** Communication, Culture and Identity
- **South Africa:** Seminar in Global Public Health



Summer Short-Term Programs and Global Seminars

- **Italy:** Creative Arts in Bologna
- **Italy:** Venetian Art and the Venice Biennale
- **Scotland:** University of Stirling’s International Summer Session
- **South Korea:** Chonnam National University’s International Summer Session
- **Spain:** University of Malaga’s Cultural Studies
- **Spain:** University of Malaga’s Intensive Spanish Program





CONTACT INFORMATION:

sucie@salisbury.edu

410-677-5027

www.salisbury.edu/abroad

 [suinternationaledu](https://www.facebook.com/suinternationaledu)

 [@su_sucie](https://twitter.com/su_sucie)

 [su_sucie](https://www.instagram.com/su_sucie)

 [sucieinternatiol](https://www.pinterest.com/sucieinternatiol)

Salisbury
UNIVERSITY

SU has a strong institutional commitment to diversity and nondiscrimination in all programs, events, and services. To that end, the University prohibits discrimination on the basis of sex, gender, marital status, pregnancy, race, color, ethnicity, national origin, age, disability, genetic information, religion, sexual orientation, gender identity or expression, veteran status or other legally protected characteristics. Direct all inquiries regarding the nondiscrimination policy to the Office of Institutional Equity/Title IX Coordinator, Holloway Hall 100, 410-543-6426.